

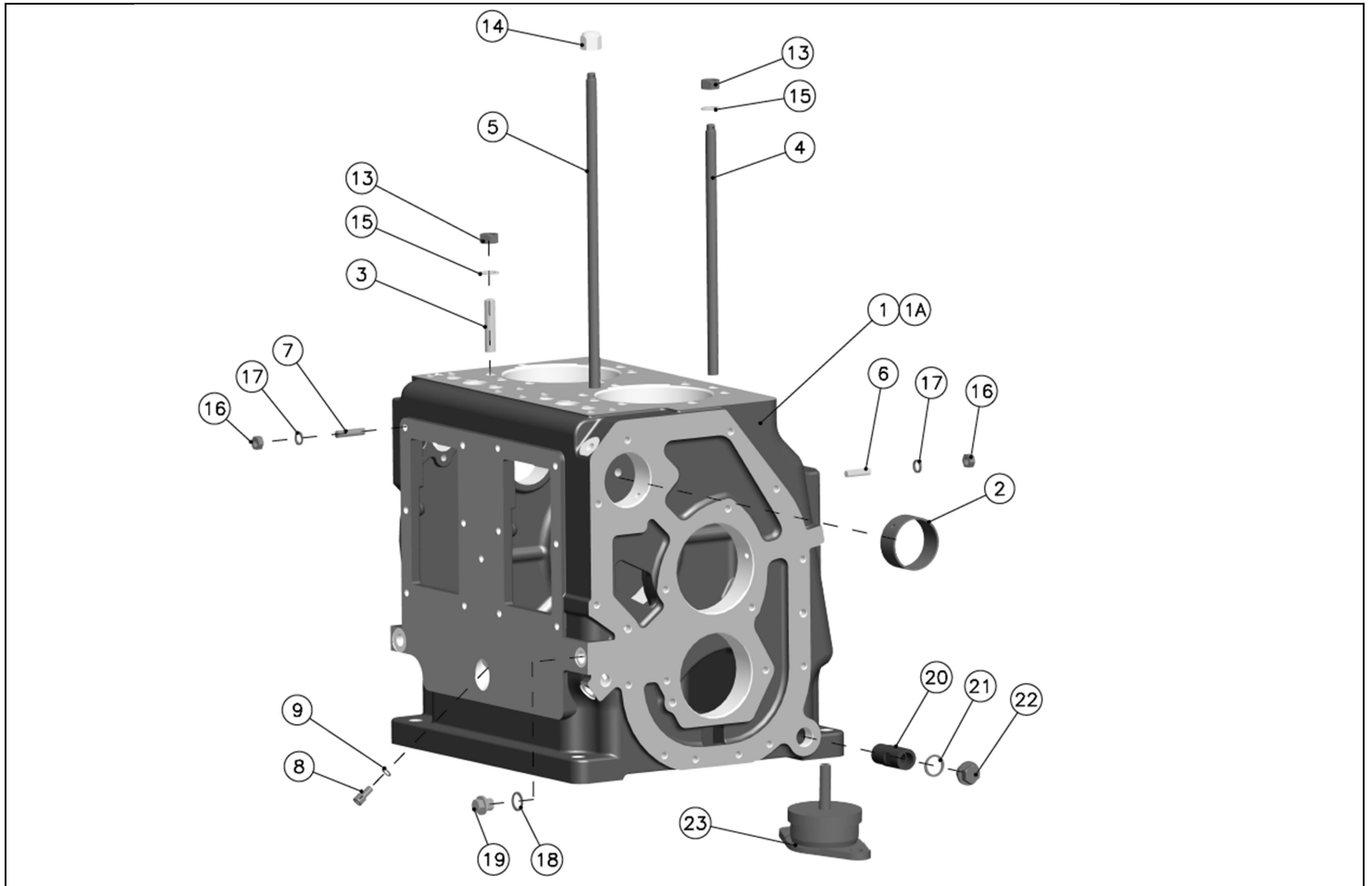
**OIL FIELD EQUIPMENT
NATURAL GAS ENGINES
& COMPRESSORS**

Manual de Repuestos

USA

ARG

 +1713 776 2050  info@diademaengine.com  +5411 4270-1185  www.diademaengine.com

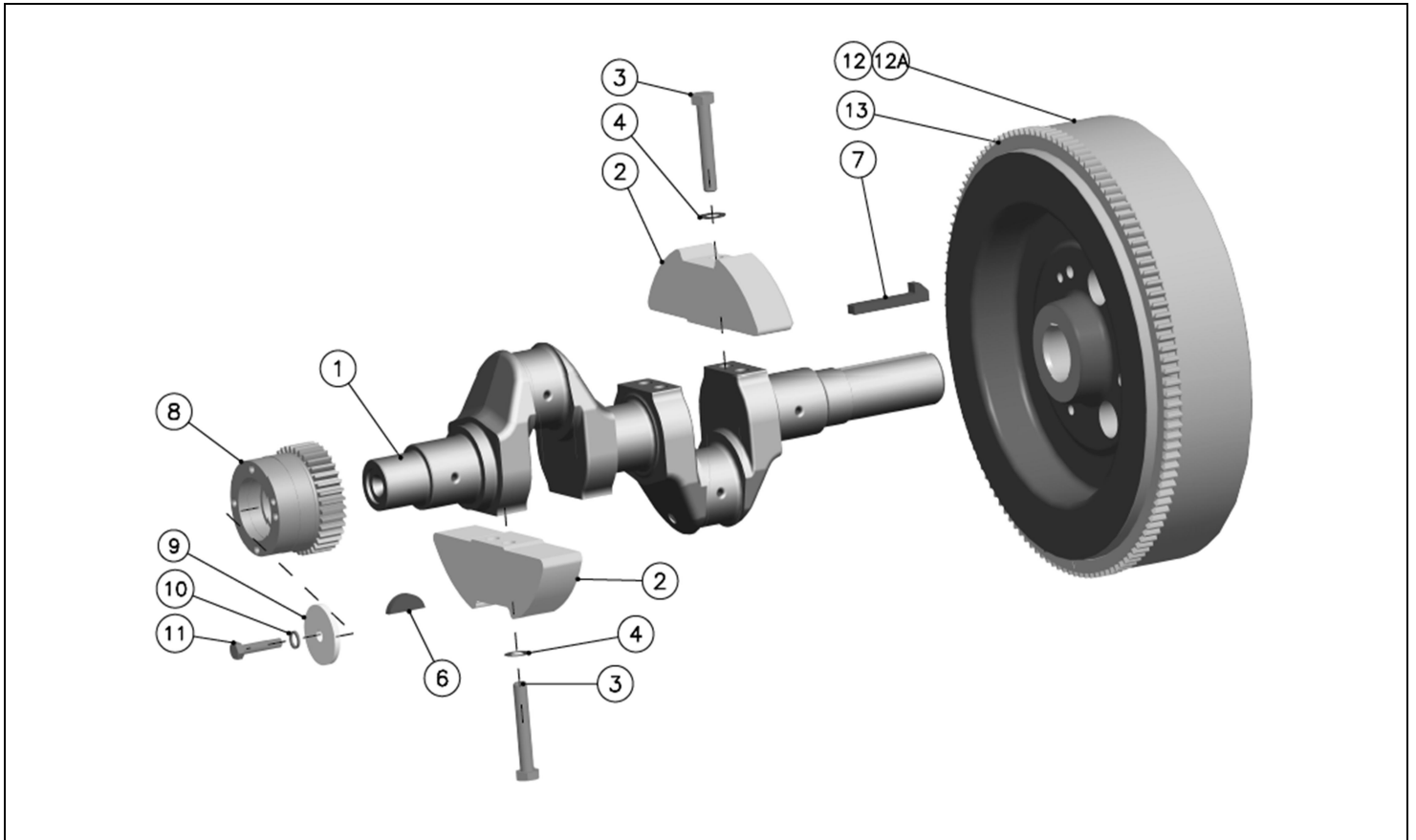


CRANKCASE, DRAIN ARRANGEMENT & ANTI VIBRATION MTG

SR NO	PART NO.	DESCRIPTION	QTY		
			DA20 D4.9012.02	DA20 D4.2013.01	DA20 D4.2013.02
1**	D4.005.01.0.00	CRANKCASE	1	1	-
1A**	D4.001.02.0.00	CRANKCASE	-	-	1
2	10.064.04.0.00	CAM BUSH 0016560001	1	1	1
3	D3.001.02.0.00	CYLINDER STUD	12	12	12
4	D3.001.03.0.00	CYLINDER HEAD STUD (SHORT)	2	2	2
5	D3.001.04.0.00	CYLINDER HEAD STUD (LONG)	2	2	2
6	50.030.02.004	STUD 5/16"BSFX1.1/8" GRADE R (M8)	12	12	6
7	10.013.08.0.00	STUD 5/16 INCH BSF X 1-5/16 INCH LONG (M	12	12	18
8	50.032.03.002	BSF HEX SOCK HEAD CAP SCREW 5/16"X1/2"L	1	1	1
9	50.508.05.000	COPPER WASHER (8X12)	1	1	1
*10	50.030.03.012	STUD 3/8"BSFX2.1/8" GRADE R	-	-	3
*11	50.030.02.011	STUD 5/16"BSFX2" GRADE R	-	-	5
*12	D4.005.10.0.00	CRANKCASE ASSLY (1,2 TO 9)	1	1	-
*12A	D4.001.10.0.00	CRANKCASE ASSLY (1A TO 11)	-	-	1
13	10.011.04.0.00	NUT (7/16" BSF)	14	14	14
14	12.001.05.0.00	DOME NUT	2	2	2
15	12.001.06.0.00	WASHER FOR CYLINDER HEAD NUT	14	14	14
16	50.015.02.000	NUT - 5/16" BSF NORMAL CLASS - GRADE P	24	24	24
17	50.505.08.000	SPRING WASHER - M8	24	24	24
18	50.508.12.000	COPPER WASHER (14X20)	2	2	2
19	D2.301.02.0.00	CORE PLUG 1/4"BSP, 12.5 LENGTH	2	2	2
20	10.002.02.0.00	DRAIN PIPE (WITH THREAD PRECOATING)	1	1	1
21	50.508.15.000	COPPER WASHER (17X23)	1	1	1
22	50.601.03.000	DRAIN PLUG 3/8" BSP	1	1	1
23	D2.163.01.0.00	AVM FOR GENSET(GREEN PASSIVATED)	-	-	4

*Parts not illustrated

**Parts not Supplied Loose

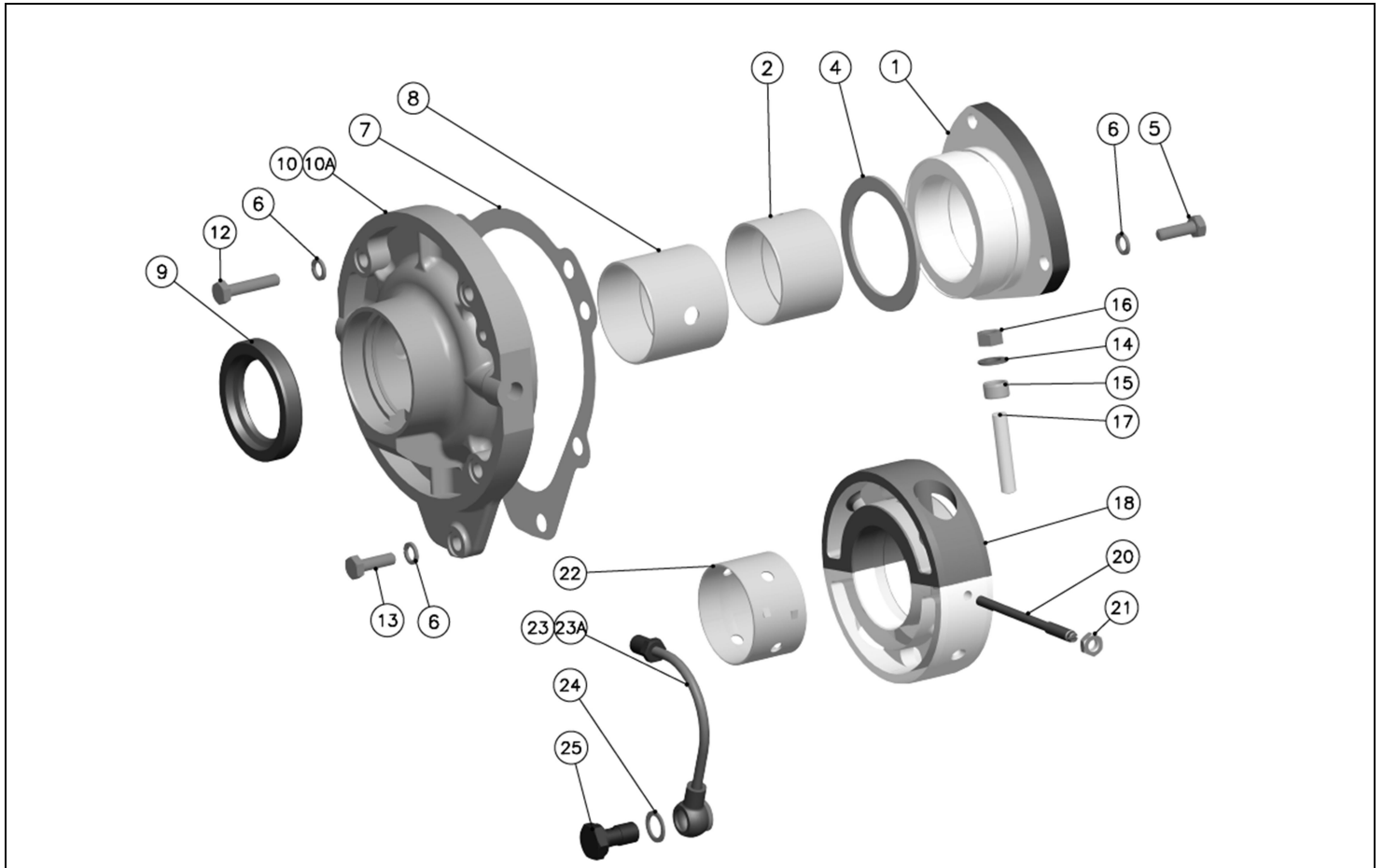


CRANKSHAFT, CRANK GEAR & FLYWHEEL

SR. NO	PART NO.	DESCRIPTION	QTY		
			DA20 D4.9012.02	DA20 D4.2013.01	DA20 D4.2013.02
1**	D2.003.30.0.00	CRANKSHAFT ASSLY WITH PLUG	1	1	1
2	D2.003.07.0.00	BALANCE WEIGHT	4	4	4
3	18.120.09.0.00	BOLT-BALANCE WEIGHT	4	4	4
4	61.207.02.0.00	WASHER-BALANCE WEIGHT BOLT	4	4	4
*5	D2.003.40.0.00	CRANKSHAFT ASSLY (SR NO 1 TO 4)	1	1	1
6	10.007.02.0.00	WOODRUFF KEY	1	1	1
7	10.007.03.0.00	FLYWHEEL KEY	1	1	1
8	10.069.01.0.00	CRANKSHAFT GEAR WHEEL	1	1	1
9	10.069.02.0.00	RETAINING PLATE	1	1	1
10	50.505.10.000	SPRING WASHER - M10	1	1	1
11	50.013.03.012	SET BOLT - 3/8"BSFX1-5/8"L - 8.8	1	1	1
12	18.097.02.0.00	FLYWHEEL	1	1	-
12A	18.097.03.0.00	FLYWHEEL-FOR CLOSE COUPLING	-	-	1
13	34.043.02.0.00	STARTER RING (ACWR ENGINE)	1	1	1
*14	18.097.10.0.00	FLYWHEEL ASSLY(SR NO 12 TO 13)	1	1	-
*14A	D4.020.10.0.00	FLYWHEEL ASSEMBLYLY - HW,ES (12A & 13)	-	-	1

*Parts not illustrated

**Parts not Supplied Loose

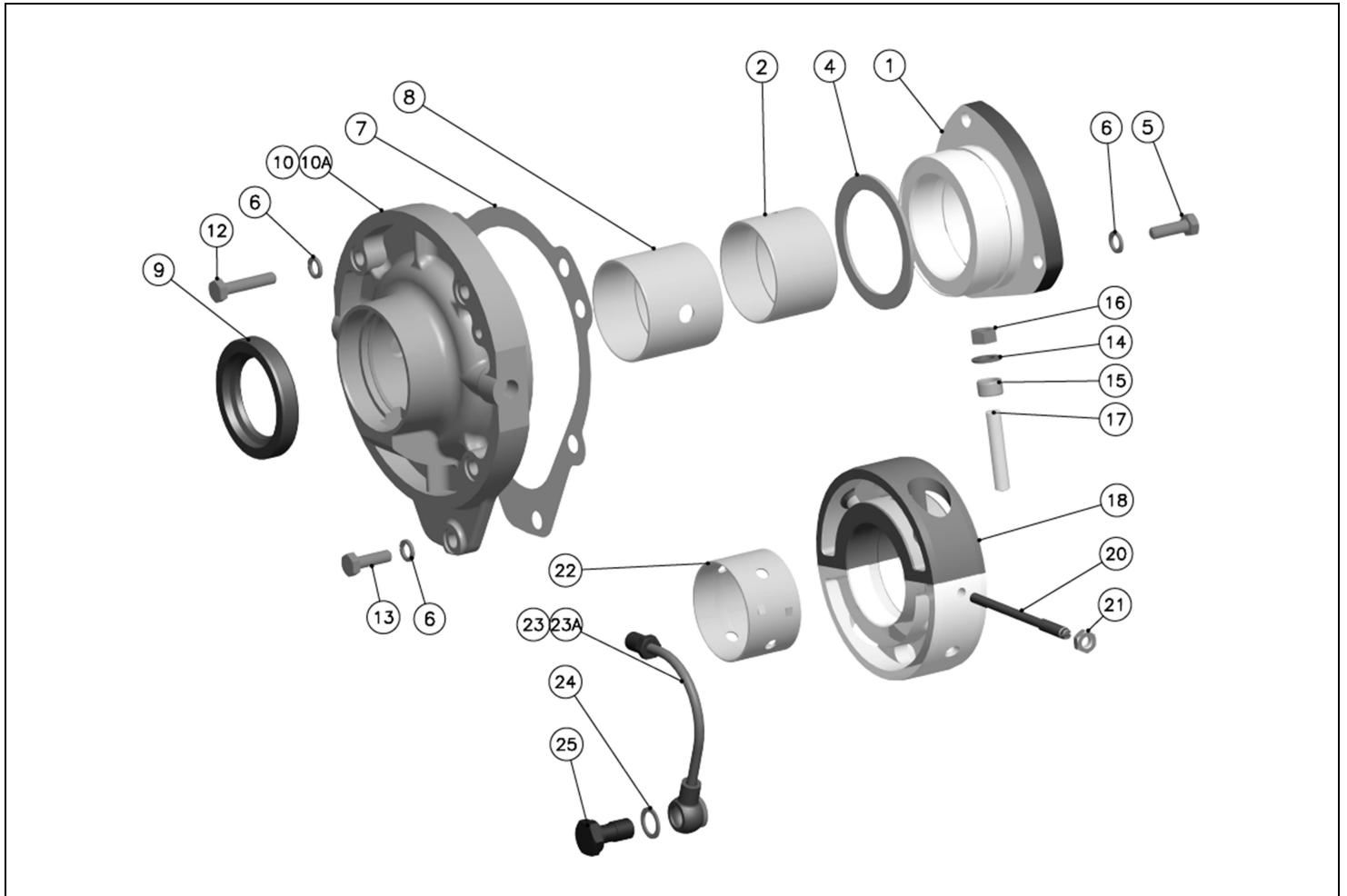


MAIN BEARING HOUSING (F.W.E.) & (G.E.) INTERMEDIATE BEARING HOUSING AND LUB. OIL PIPING

SR. NO	PART NO.	DESCRIPTION	QTY		
			DA20 D4.9012.02	DA20 D4.2013.01	DA20 D4.2013.02
1	18.002.01.0.00	MB HSG G.E.	1	1	1
2	18.002.02.0.00	MAIN BRG.(015490001)	1	1	1
*3	18.002.10.0.00	MAIN BEARING ASSLY(SR NO 1 TO 2)	1	1	1
4	18.002.03.0.00	THRUST WASHER	2	2	2
5	50.014.02.007	SET SCREW - 5/16"BSFX1"L - 8.8	3	3	3
6	50.505.08.000	SPRING WASHER - M8	8	8	8
7	11.004.03.0.00	JOINT FOR FWE HOUSING	1	1	1
8	18.004.02.0.00	MAIN BEARING	1	1	1
9	10.008.04.0.00	OIL SEAL 1.7/8" R/R	1	1	1
10	19.057.02.0.00	MB HSG FWE	1	1	-
10A	19.216.01.0.00	MB HSG FWE	-	-	1
*11	19.217.10.0.00	ASLY.MB HSG. FWE(SR NO 8,9 & 10)	1	1	-
*11A	19.216.10.0.00	ASLY.MB HSG. FWE(SR NO 8,9 & 10A)	-	-	1
12	50.014.02.007	SET SCREW - 5/16"BSFX1"L - 8.8	1	1	1
13	50.014.02.011	SET SCREW - 5/16"BSFX1-1/2"L - 8.8	4	4	4
14	50.506.10.000	PLAIN MACHINED WASHER - M10	2	2	2
15	19.002.03.0.00	DOWEL(16 O.D)	2	2	2
16	50.015.03.000	NUT - 3/8 INCH BSF NORMAL CLASS GRADE	2	2	2
17	50.030.03.009	STUD 3/8"BSFX1.3/4" GRADE R	2	2	2
18	19.002.04.0.00	INTERMEDIATE BEARING HOUSING	1	1	1
*19	19.002.30.0.00	INT. BEARING HOUSING ASSLY (SR 14 TO 18)	1	1	1
20	11.002.04.0.00	LOCKING PIN (F) FOR INT. BRG HSG.	1	1	1
21	50.016.02.000	LOCK NUT - 5/16"BSF NORMAL CLASS - GR.P	1	1	1
22	19.002.02.0.00	INT.BRG(HALF)0203310001	2	2	2

*Parts not illustrated

**Parts not Supplied Loose

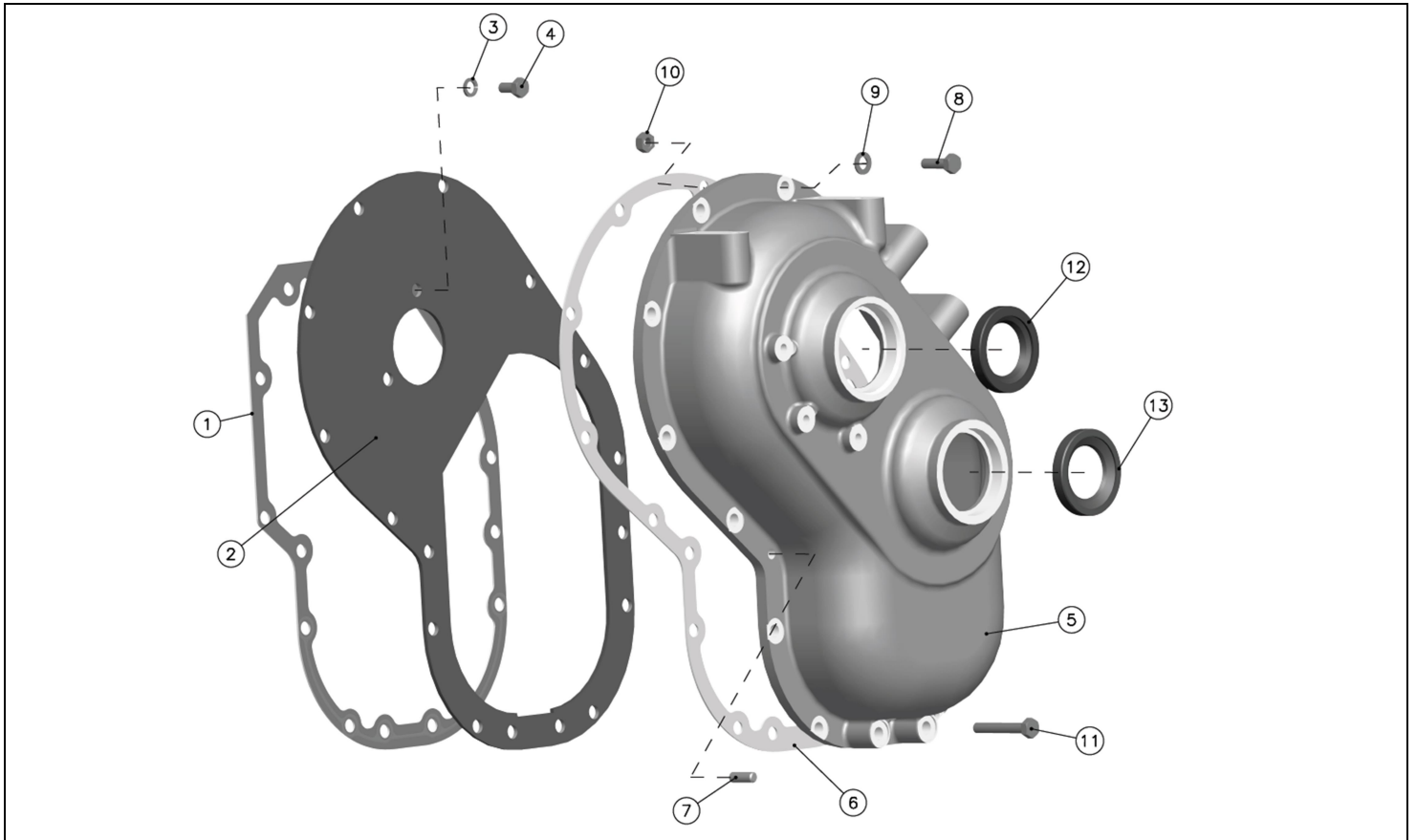


MAIN BEARING HOUSING (F.W.E.) & (G.E.) INTERMEDIATE BEARING HOUSING AND LUB. OIL PIPING

SR. NO	PART NO.	DESCRIPTION	QTY		
			DA20 D4.9012.02	DA20 D4.2013.01	DA20 D4.2013.02
23	11.024.10.0.00	L O PIPE (CR CASE TO FWE HSG)	1	1	-
23A	11.242.10.0.00	L O PIPE ASSLY -C'CASE-FWE BRG HSG	-	-	1
24	50.508.12.000	COPPER WASHER (14X20)	2	2	2
25	50.538.03.000	BANJO BOLT - 1/4" BSP	1	1	1

*Parts not illustrated

**Parts not Supplied Loose

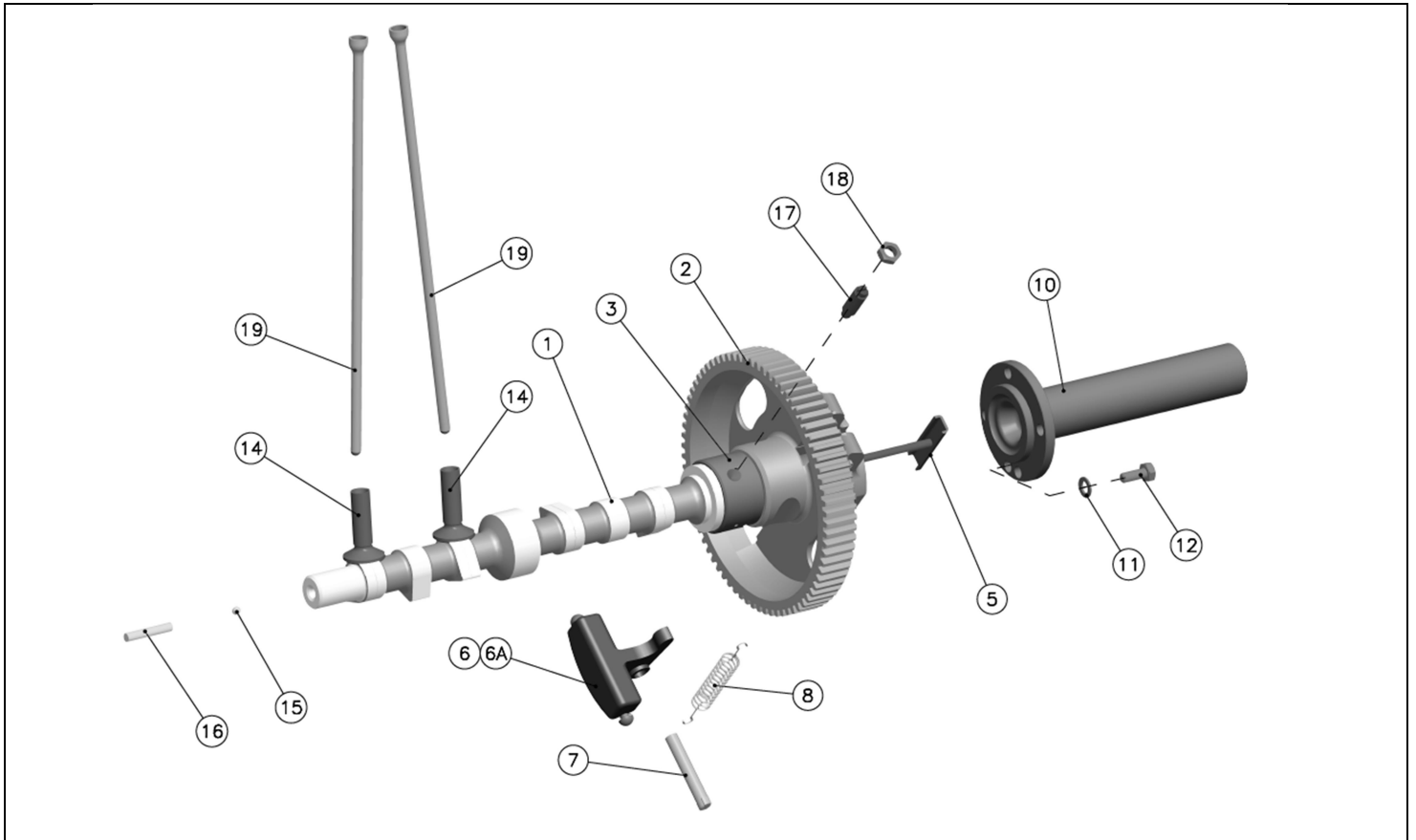


GEAR COVER & GEAR COVER PLATE

SR. NO	PART NO.	DESCRIPTION	QTY		
			DA20 D4.9012.02	DA20 D4.2013.01	DA20 D4.2013.02
1	11.006.03.0.00	JT.GEAR COVER PLATE & CR'CASE (CONTROLLED SWELL)	1	1	1
2	11.006.02.0.00	GEAR COVER PLATE	1	1	1
3	50.505.08.000	SPRING WASHER - M8	2	2	2
4	50.014.02.004	SET SCREW - 5/16"BSFX5/8"L - 8.8	2	2	2
5	11.117.02.0.00	GEAR COVER (INT OIL SEAL HSG) NEW CRANK PULLEY	1	1	1
6	11.014.03.0.00	GEAR COVER JOINT	1	1	1
7	11.169.05.0.00	DOWEL	2	2	2
8	50.014.02.007	SET SCREW - 5/16"BSFX1"L - 8.8	12	12	12
9	50.507.08.000	PLAIN PUNCHED WASHER - M8	12	12	12
10	50.015.02.000	NUT - 5/16" BSF NORMAL CLASS - GRADE P	4	4	4
11	50.013.02.014	SET BOLT - 5/16 INCH BSFX2 INCH LONG - 8.8	2	2	2
12	10.030.04.0.00	OIL SEAL	1	1	1
13	10.030.03.0.00	OIL SEAL	1	1	1

*Parts not illustrated

**Parts not Supplied Loose

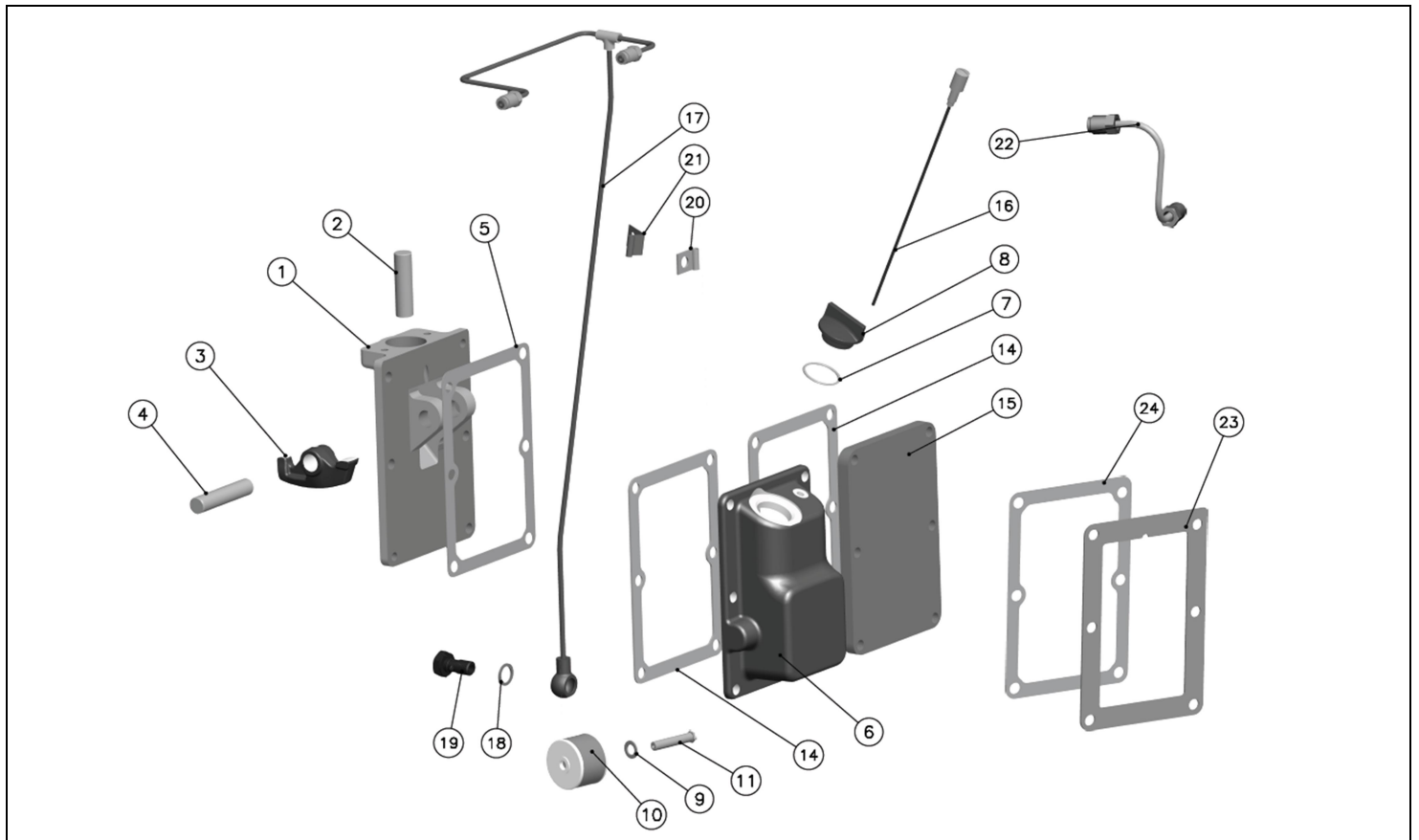


CAMSHAFT, GOVERNOR & PUSH RODS

SR. NO	PART NO.	DESCRIPTION	QTY		
			DA20 D4.9012.02	DA20 D4.2013.01	DA20 D4.2013.02
1**	11.094.01.0.00	CAMSHAFT (ACWR)	1	1	1
2	10.017.01.0.00	CAMGEAR WHEEL	1	1	1
3	10.017.06.0.00	THRUST BUSH	1	1	1
*4	19.356.20.0.00	ASSLY OF CAMSHAFT,GEAR & BUSH(SR NO 1,2 & 3)	1	1	1
5	11.037.20.0.00	GOVERNOR PUSH ROD ASSEMBLY	1	1	1
6	10.018.10.0.00	GOVERNOR WEIGHT (1500 RPM)	2	-	2
6A	10.182.02.0.00	GOVERNOR WEIGHT FOR VARIABLE SPEED	-	2	-
7	10.018.03.0.00	PIN FOR GOVERNOR WEIGHT & GEAR	2	2	2
8	10.018.02.0.00	GOVERNOR SPRING	2	-	2
*9	19.356.10.0.00	ASSLY OF CAMSHAFT WITH GOVERNORWEIGHT (SR NO 4,5,6,7 & 8)	1	-	1
*9A	19.358.10.0.00	ASSLY OF CAMSHAFT WITH GOVERNORWEIGHT (SR NO 4,5,6A & 7)	-	1	-
10	10.109.01.0.00	EXTENSION SHAFT(7.625" LONG)	1	1	1
11	10.020.03.0.00	HARD WASHER	4	4	4
12	50.057.02.005	SET SCREW-5/16"BSFX3/4"-10.9	4	4	4
*13	19.356.40.0.00	ASSLY OF CAMSHAFT WITH EXTN SHAFT (SR NO 9,10,11 TO 12)	1	-	1
*13A	19.358.20.0.00	ASSLY OF CAMSHAFT WITH EXTN SHAFT (SR NO 9A,10,11 TO 12)	-	1	-
14	10.016.04.0.00	VALVE TAPPET	4	4	4
15	10.004.11.0.00	STEEL BALL HARD	1	1	1
16	11.037.03.0.00	GOVERNOR PUSH ROD	1	1	1
17	10.147.14.0.00	ROCKER ADJUSTING SCREW	1	1	1
18	10.017.05.0.00	LOCK NUT FOR LOCKING SCREW	1	1	1
19	D3.006.01.0.00	VALVE PUSH ROD(317.5 mm LONG)	4	4	4

*Parts not illustrated

**Parts not Supplied Loose



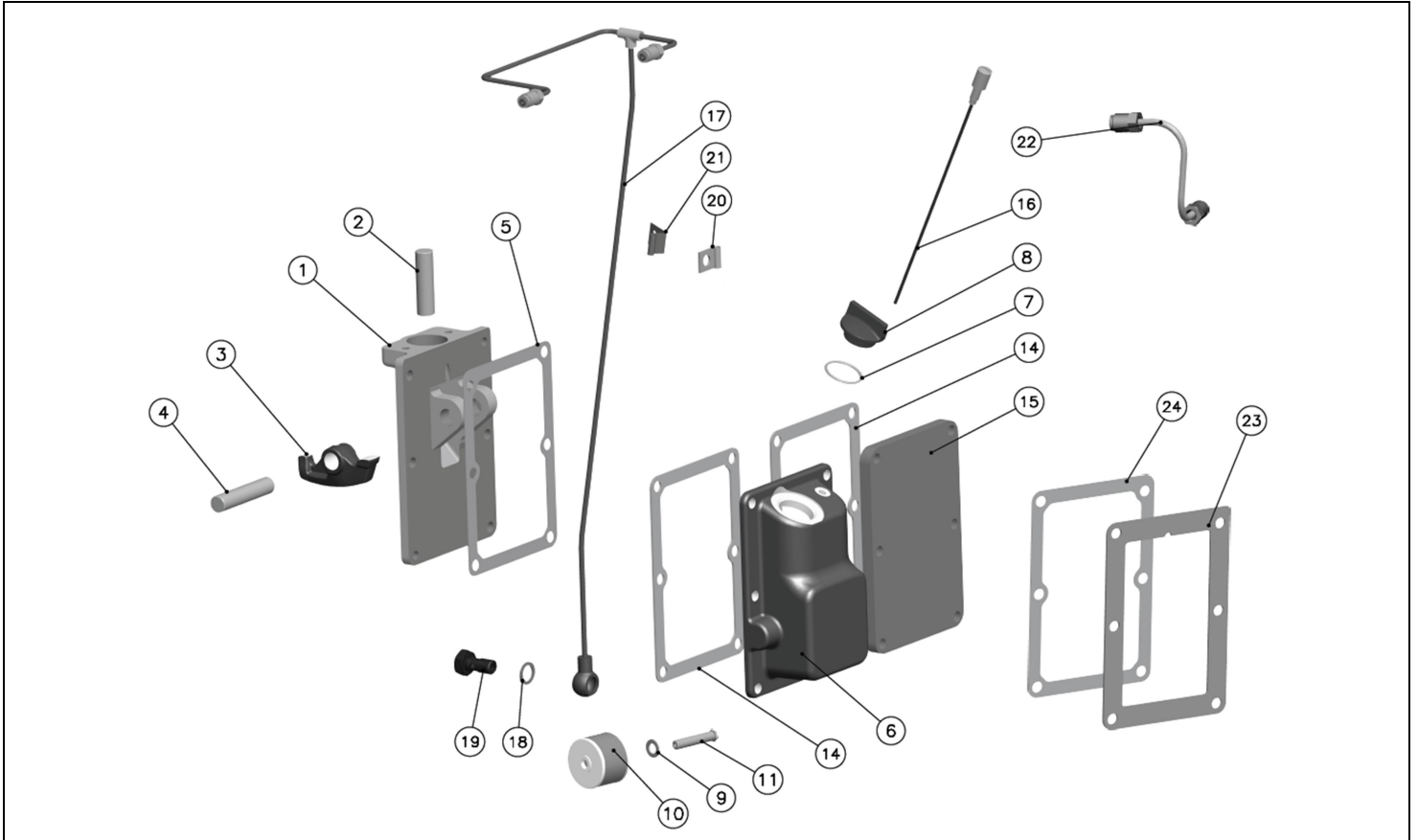
FUEL PUMP BRACKET, INSPECTION COVER, FILTER CASING, DIPSTICK

L.O. PIPE AND JOINT RR

SR. NO	PART NO.	DESCRIPTION	QTY		
			DA20 D4.9012.02	DA20 D4.2013.01	DA20 D4.2013.02
1	12.113.01.0.00	FUEL PUMP BRACKET	2	2	2
2	10.025.02.0.00	FUEL PUMP TAPPET PLUNGER	2	2	2
3	10.025.03.0.00	F.P.R LEVER	2	2	2
4	10.025.04.0.00	SPINDLE-FPRO LEVER	2	2	2
5	10.025.07.0.00	JOINT FOR FP BKT. & CR. CASE (CONTROLLED SWELL)	2	2	2
6	11.016.05.0.00	FILTER CASING TWIN	1	1	1
7	16.014.21.0.00	PLUG-NYLON	1	1	1
8	16.014.19.0.00	O-RING	1	1	1
9	10.031.04.0.00	WASHER	1	1	1
10	10.031.05.0.00	LUB.OIL FILTER ELEMENT	1	1	1
11	10.031.50.0.00	CENTRE BOLT SUB-ASSLY	1	1	1
*12	50.016.02.000	LOCK NUT - 5/16"BSF NORMAL CLASS - GR.P	1	1	1
*13	11.016.50.0.00	FILTER CASING ASSLY.-TWIN(SR NO 6,7 TO 10,11,12)	1	1	1
14	11.015.02.0.00	JOINT FOR INSP.COVER(CONTROLLED SWELL)	4	4	4
15	11.015.01.0.00	INSPECTION COVER	1	1	1
16	18.067.30.0.00	DIPSTICK ASSLY	1	1	1
17	21.165.10.0.00	L.O.PIPE(CR'CASE TO BOTH R'SH)	1	1	1
18	50.508.12.000	COPPER WASHER (14X20)	2	2	2
19	50.538.03.000	BANJO BOLT - 1/4" BSP	1	1	1
20	11.025.03.0.00	CLIP FOR LUB.OIL PIPE	1	1	1
21	11.025.16.0.00	CLIP FOR PIPE	1	1	1

*Parts not illustrated

**Parts not Supplied Loose

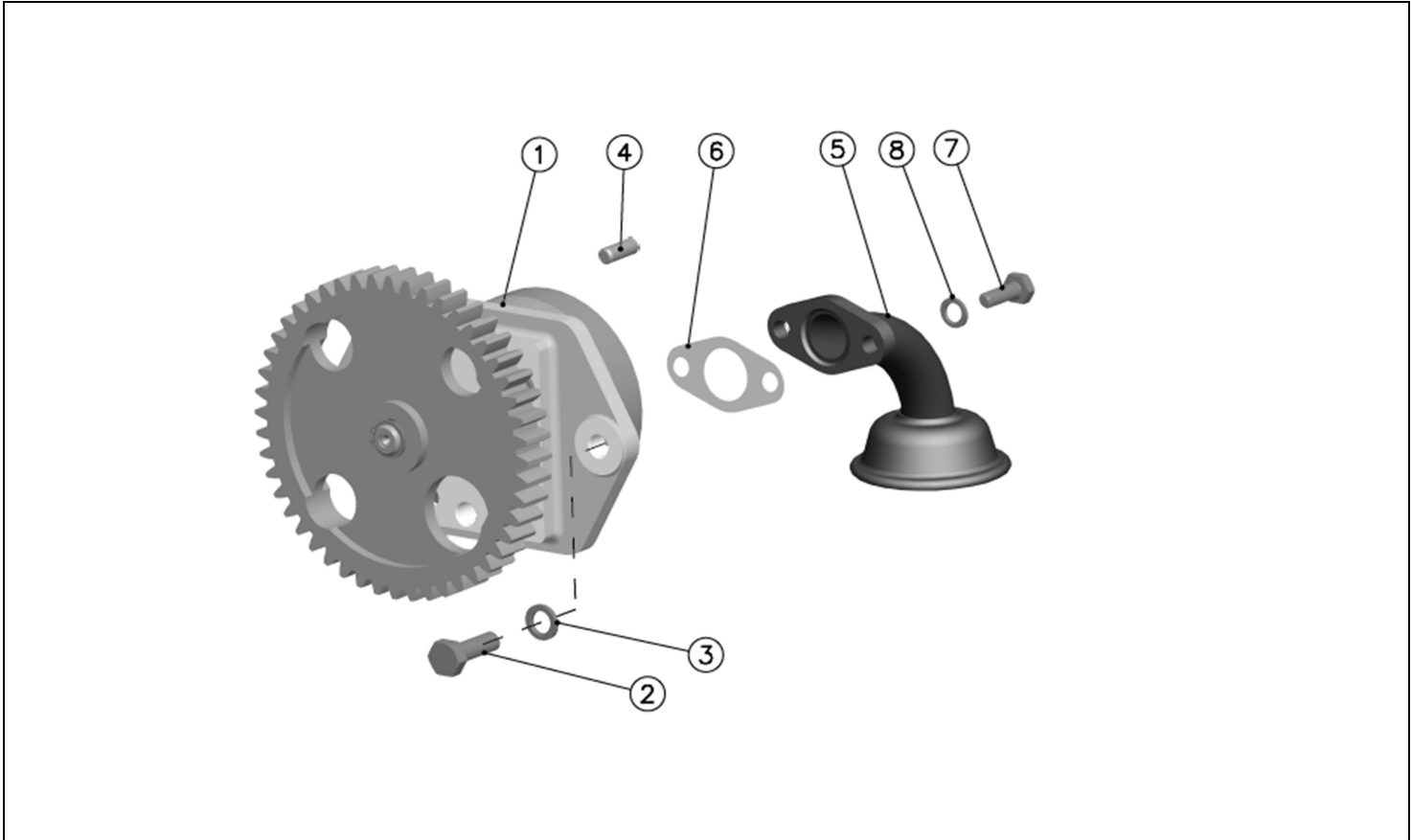


**FUEL PUMP BRACKET, INSPECTION COVER, FILTER CASING, DIPSTICK
L.O. PIPE AND JOINT RR**

SR. NO	PART NO.	DESCRIPTION	QTY		
			DA20 D4.9012.02	DA20 D4.2013.01	DA20 D4.2013.02
22	11.017.10.0.00	L.O. PIPE (COPPER)CR.CASE TO F.CASING	1	1	1
23	10.368.01.0.00	SHIM FOR F.P. BKT	2	2	2
24	10.025.05.0.00	JOINT FOR FP BKT & C'CASE	2	2	2

*Parts not illustrated

**Parts not Supplied Loose

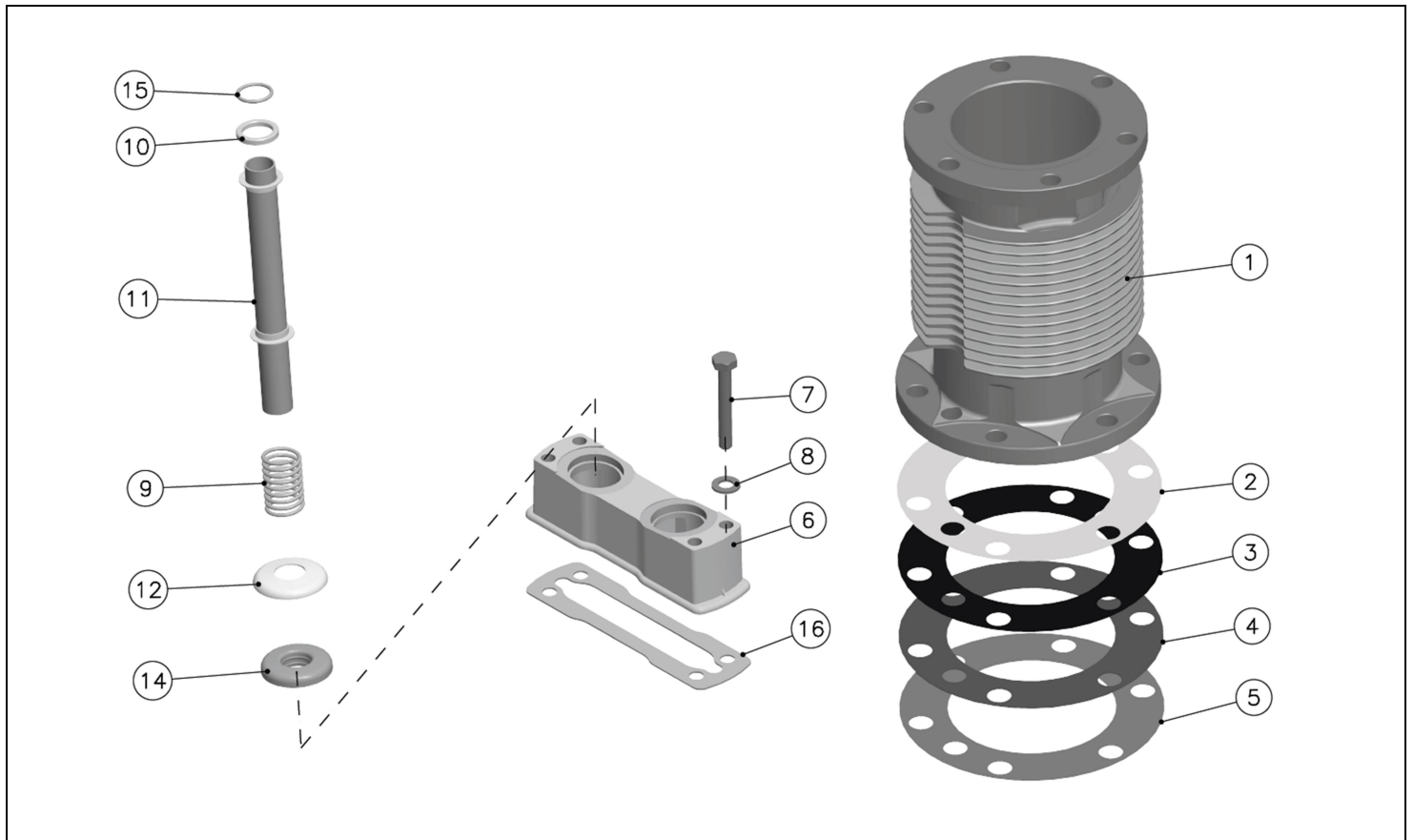


LUB OIL GEAR PUMP & STRAINER

SR. NO	PART NO.	DESCRIPTION	QTY		
			DA20 D4.9012.02	DA20 D4.2013.01	DA20 D4.2013.02
1	D2.141.40.0.00	GEAR PUMP WITH STL GEAR & RELIEF VALVE	1	1	1
2	50.014.02.007	SET SCREW - 5/16"BSFX1"L - 8.8	2	2	2
3	50.505.08.000	SPRING WASHER - M8	2	2	2
4	11.169.05.0.00	DOWEL	1	1	1
5	D2.009.10.0.00	SUCTION TUBE ASSEMBLY	1	1	1
6	D2.009.05.0.00	JOINT FOR SUCTION TUBE.	1	1	1
7	50.014.01.005.	SET SCREW - 1/4"BSFX3/4"L - 8.8	2	2	2
8	50.505.07.000.	SPRING WASHER - M7	2	2	2

*Parts not illustrated

**Parts not Supplied Loose

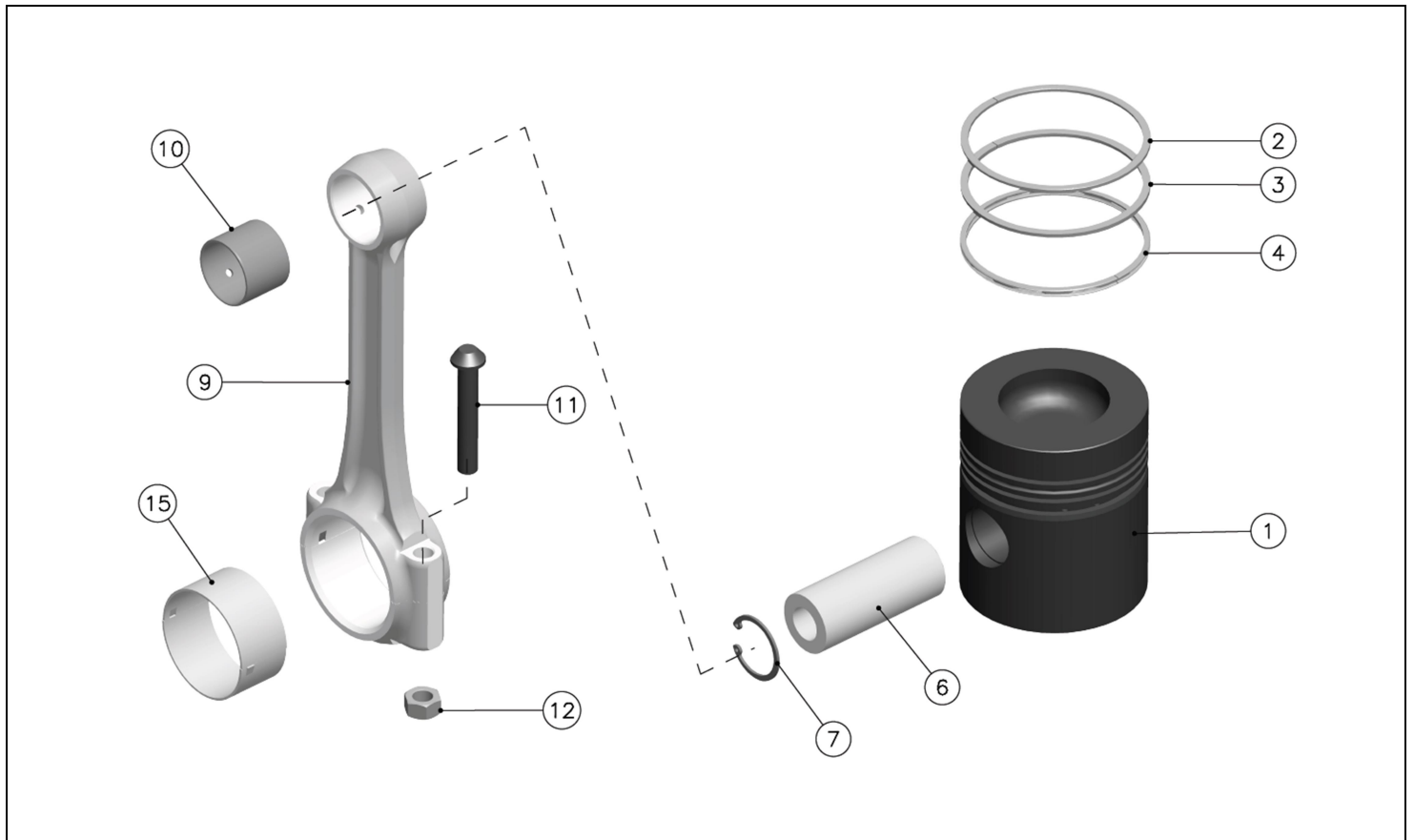


CYLINDER LINER & PUSHROD TUBE

SR. NO	PART NO.	DESCRIPTION	QTY		
			DA20 D4.9012.02	DA20 D4.2013.01	DA20 D4.2013.02
1	D3.002.01.0.00	CYLINDER LINER	2	2	2
2	D3.002.02.0.00	JOINT-0.005"-FOR LINER	4	4	4
3	D3.002.03.0.00	JOINT-0.010"FOR LINER	4	4	4
4	D3.002.04.0.00	JOINT-0.015"FOR LINER	2	2	2
5	D3.002.05.0.00	JT.FLEXOID(CR'CASE TO CYL.LINER)	2	2	2
6	12.005.09.0.00	SUPPORT FOR PUSH ROD TUBE(PLASTIC)	2	2	2
7	50.013.02.015	SET BOLT - 5/16" BSFX2-1/4" LONG - 8.8	8	8	8
8	50.505.08.000	SPRING WASHER - M8	8	8	8
9	02.024.04.0.00	SPRING	4	4	4
10	12.005.07.0.00	WASHER FOR RUBBER RING	4	4	4
11	D3.005.10.0.00	PUSH ROD TUBE SUB ASSLY	4	4	4
12	34.011.02.0.00	CUP FOR P R TUBE	4	4	4
*13	D3.005.20.0.00	PUSH ROD TUBE (SR NO 10 TO 12)	2	2	2
14	12.005.08.0.00	RUBBER BUSH	4	4	4
15	12.005.05.0.00	O RING FOR PUSH ROD TUBE	4	4	4
16	12.005.02.0.00	JOINT-PR TUBE SUPPORT	2	2	2

*Parts not illustrated

**Parts not Supplied Loose

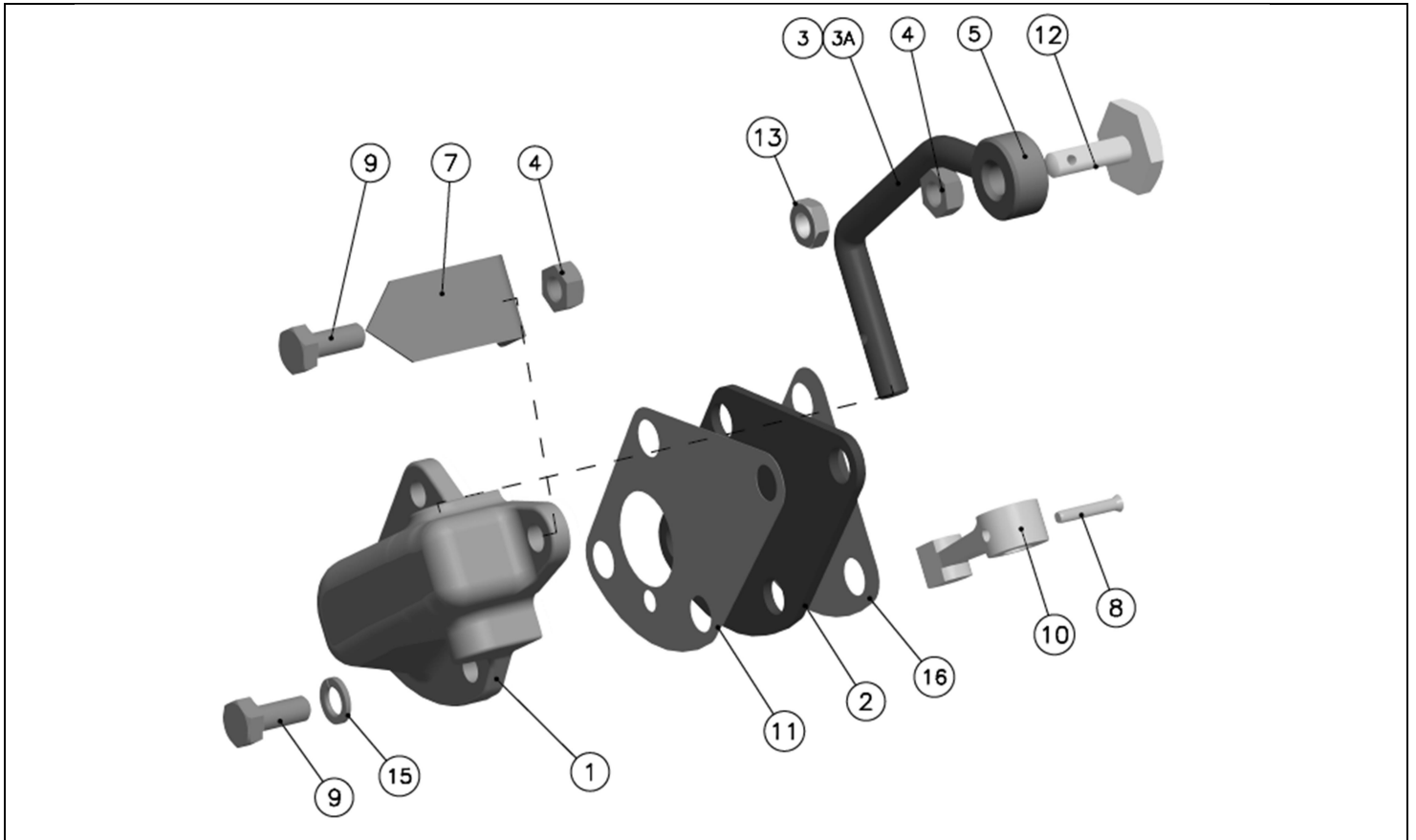


PISTON & CONNECTING ROD

SR. NO	PART NO.	DESCRIPTION	QTY		
			DA20 D4.9012.02	DA20 D4.2013.01	DA20 D4.2013.02
1**	D1.026.01.0.00	PISTON	2	2	2
2**	D1.026.02.0.00	TOP CHR.RING	2	2	2
3**	D1.026.03.0.00	COMPRESSION RING	2	2	2
4**	D1.026.04.0.00	CONFORMABLE OIL CONTROL RING	2	2	2
*5**	D1.026.20.0.00	PISTON RING SET (SR NO 2 TO 4)	2	2	2
6	D1.006.06.0.00	PISTON PIN	2	2	2
7	50.502.35.000	CIRCLIP INTERNAL - 35 MM	4	4	4
*8	D1.026.10.0.00	PISTON ASSLY (SR NO 5 TO 7)	2	2	2
9**	D3.030.01.0.00	CON. ROD WITH OIL HOLE AND CAP	2	2	2
10	D3.030.03.0.00	SMALL END BUSH-WITH HOLE	2	2	2
11	D1.005.02.0.00	BOLT-CON.ROD	4	4	4
12	10.011.04.0.00	NUT (7/16" BSF)	4	4	4
*13	D3.030.10.0.00	CON. ROD ASSLY.(OIL HOLE) (SR NO 9 TO 12)	2	2	2
*14	D3.030.20.0.00	PISTON & CON ROD ASSLY (SR NO 8 & 13)	2	2	2
15**	D3.030.02.0.00	L.E. BEARING	4	4	4

*Parts not illustrated

**Parts not Supplied Loose

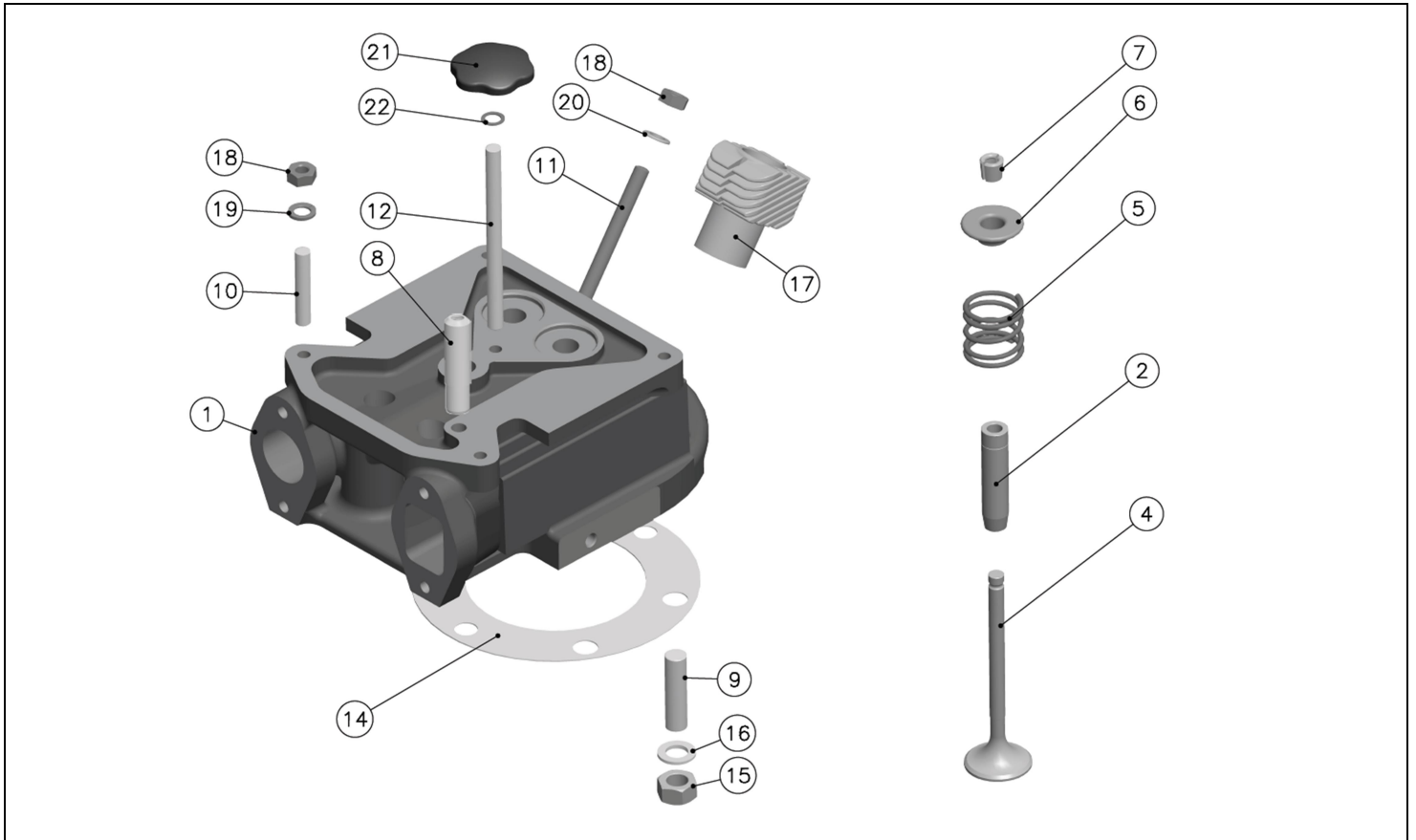


FULCRUM BRACKET

SR. NO	PART NO.	DESCRIPTION	QTY		
			DA20 D4.9012.02	DA20 D4.2013.01	DA20 D4.2013.02
1**	10.024.01.0.00	FULCRUM BRACKET	1	1	1
2**	10.024.03.0.00	ADAPTOR PLATE	1	1	1
3**	10.024.09.0.00	FUEL PUMP RACK OPRT LEVER(EXTERNAL)	1	1	1
3A**	12.084.03.0.00	RACK OPERATING LEVER	-	1	1
4	50.015.02.000	NUT - 5/16" BSF NORMAL CLASS	2	2	2
5	12.084.02.0.00	RACK ADJUSTING BUSH	-	1	1
*6	10.024.10.0.00	RACK OP. LEVER (EXT) (SR NO 3,4)	1	-	-
*6A	D1.119.50.0.00	FPR OPERATING LEVER ASSLY.(EXT) (SR NO 3A,4,5)	-	1	1
7	10.024.08.0.00	POINTER-FLYWHEEL	1	1	1
8**	10.004.12.0.00	LOCATING PIN	1	1	1
9	50.014.02.005	SET SCREW - 5/16"BSFX3/4"L - 8.8	4	4	4
10**	10.024.04.0.00	RACK OP.LEV-INTERNAL	1	-	-
11	10.024.05.0.00	JOINT FOR F-BKT & ADAPT-PL	1	1	1
12	10.027.01.0.00	ADT.SCREW-G0V.LEVER	1	1	1
13	50.016.02.000	LOCK NUT - 5/16"BSF NORMAL CLASS	1	1	1
*14	10.024.50.0.00	FULCRUM BRACKET ASSLY (SR NO 1,2,6,7 TO 13)	1	-	-
*14A	D1.119.40.0.00	FULCRM'BKT.ASLY.(RACHET VSC) - MOROCCO (SR NO 1,2,6A TO 9,11,12,13)	-	1	1
15	50.505.08.000	SPRING WASHER - M8	3	3	3
16	10.024.06.0.00	JOINT FOR ADAPT-PL & C'CASE	1	1	1

*Parts not illustrated

**Parts not Supplied Loose

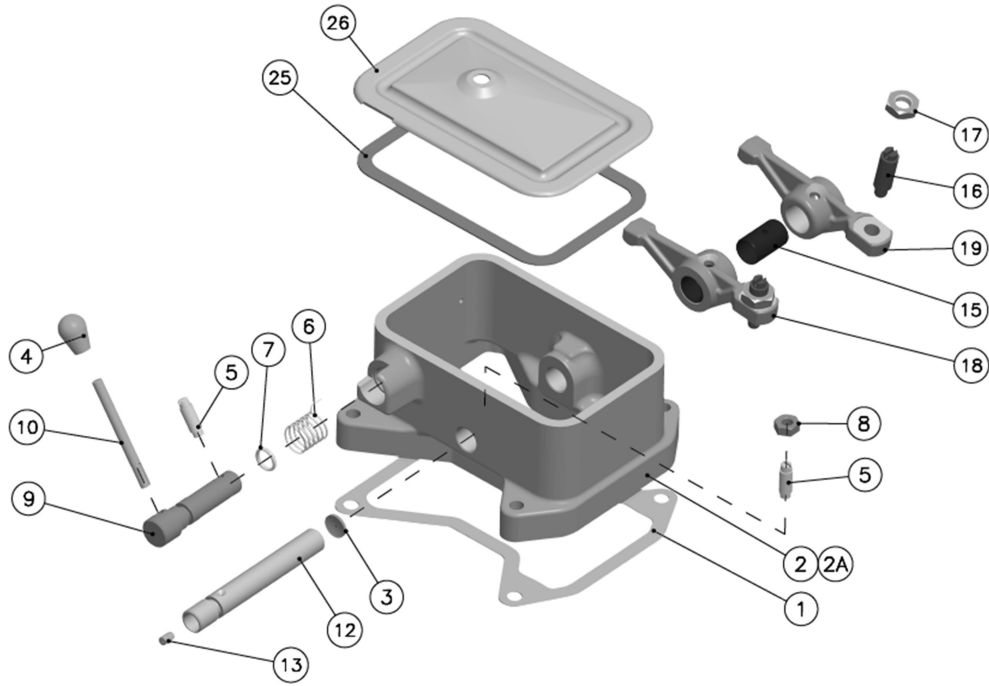


CYLINDER HEAD

SR NO	PART NO.	DESCRIPTION	QTY		
			DA20 D4.9012.02	DA20 D4.2013.01	DA20 D4.2013.02
1**	D3.003.01.0.00	CYLINDER HEAD	2	2	2
2	D3.003.05.0.00	VALVE GUIDE	4	4	4
*3**	D3.003.10.0.00	CYL HEAD WITH VALVE GUIDE (SR NO 1 & 2)	2	2	2
4	D3.003.03.0.00	INLET & EXHAUST VALVE	4	4	4
5	18.128.01.0.00	VALVE SPRING	4	4	4
6	18.128.06.0.00	VALVE CUP	4	4	4
7	10.015.06.0.00	VALVE COLLET - PAIR	4	4	4
8	FA1.021.20.0.00	BREATHER VALVE SUB ASSEMBLY	2	2	2
9	D3.001.02.0.00	STUD FOR CYLINDER LINER	8	8	8
10	50.030.02.009	STUD 5/16"BSFX1.3/4" GRADE R	8	8	8
11	12.006.08.0.00	STUD FOR NOZZLE HOLDER	4	4	4
12	50.030.02.026	STUD 5/16"BSFX4.1/4" GRADE R	2	2	2
*13	D3.003.20.0.00	CYL.HEAD ASSEMBLY (SR NO 4 TO 12)	2	2	2
14	D3.003.06.0.00	STEEL GASKET-CYL.HEAD	2	2	2
15	10.011.04.0.00	NUT (7/16" BSF)	8	8	8
16	12.001.06.0.00	WASHER FOR CYLINDER HEAD NUT	8	8	8
17	12.006.04.0.00	SOCKET FOR N HOLDER	2	2	2
18	50.015.02.0.00	NUT - 5/16" BSF NORMAL CLASS	12	12	12
19	50.505.08.0.00	SPRING WASHER - M8	8	8	8
20	50.506.08.0.00	PLAIN MACHINED WASHER - M8	4	4	4
21	10.015.25.0.00	NUT-ROCKER COVER	2	2	2
22	50.544.05.0.00	ALUMINIUM WASHER	2	2	2

*Parts not illustrated

**Parts not Supplied Loose

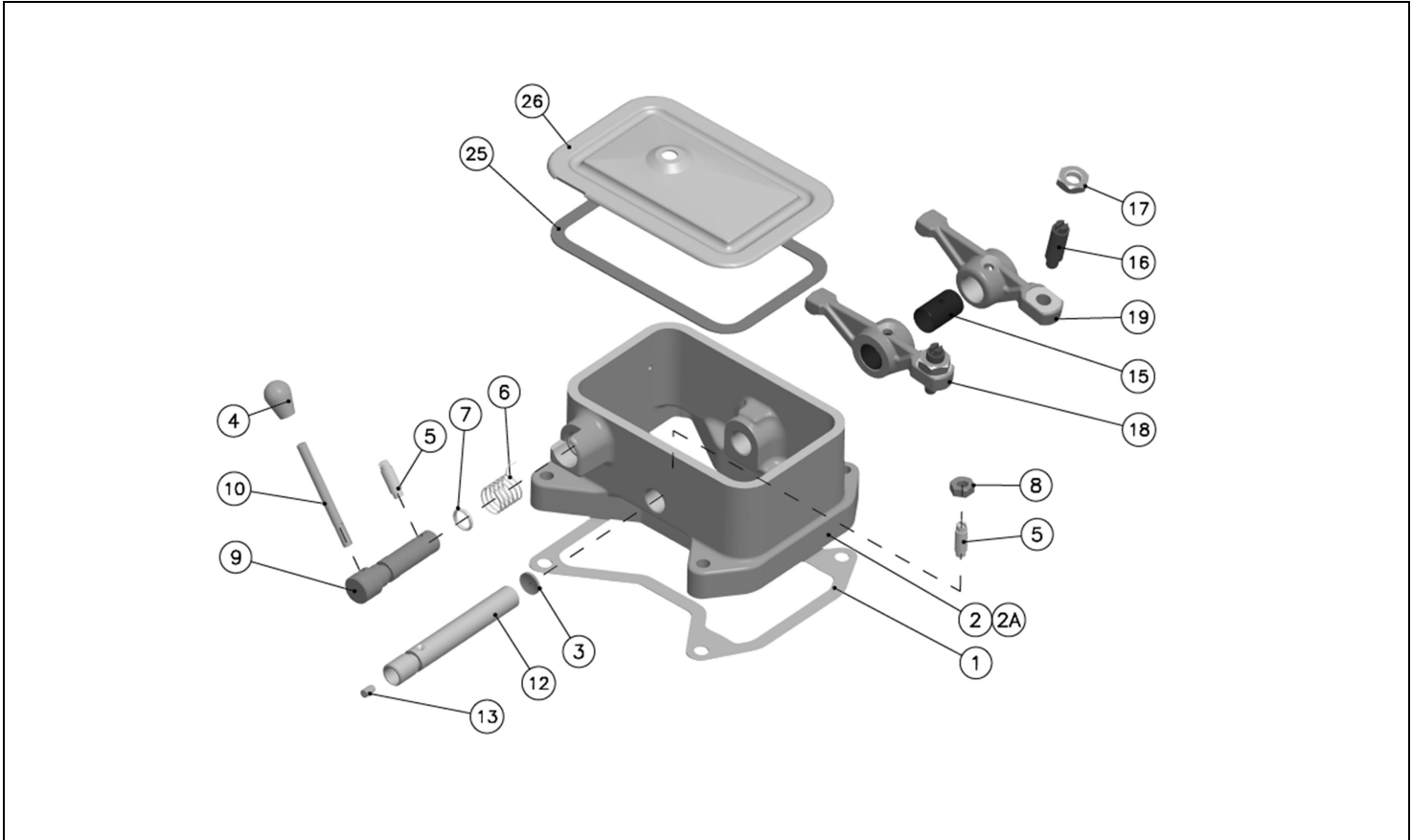


ROCKER BOX AND VALVE ROCKER LEVERS AND COVER

SR. NO	PART NO.	DESCRIPTION	QTY		
			DA20 D4.9012.02	DA20 D4.2013.01	DA20 D4.2013.02
1	10.022.03.0.00	JT.R-BOX & HEAD	2	2	2
2	12.007.01.0.00	ROCKER BOX	1	1	1
2A	13.003.02.0.00	ROCKER BOX	1	1	1
3	10.021.02.0.00	CORE PLUG	2	2	2
4	10.022.11.0.00	KNOB FOR DECOMP.OPERATING LEVER	2	2	2
5	10.022.08.0.00	PEG-D'COMP	4	4	4
6	10.022.07.0.00	SPRING-D'COMP	2	2	2
7	11.109.02.0.00	O RING	2	2	2
8	50.015.02.000	NUT - 5/16" BSF NORMAL CLASS	2	2	2
9	10.022.05.0.00	DECOMP.SHAFT	2	2	2
10	10.022.06.0.00	D'COMP.LEVER	2	2	2
*11	10.022.20.0.00	DECOM.SHAFT. ASSLY(SR NO 9,10)	2	2	2
12	11.109.01.0.00	ROCKER SHAFT	2	2	2
13	11.109.03.0.00	BUSH-R'SHAFT	2	2	2
*14	11.109.20.0.00	R'SHAFT & BUSH (SR NO 12,13)	2	2	2
15	10.147.11.0.00	V.R.BUSH	2	2	2
16	10.147.14.0.00	ROCKER ADJUSTING SCREW	4	4	4
17	50.016.04.000	LOCK NUT - 7/16"BSF NORMAL CLASS	4	4	4
18	10.147.09.0.00	VR-LEVER-INLET	2	2	2
19	10.147.08.0.00	VR-LEVER-EXH	2	2	2
*20**	10.147.20.0.00	ASLY.INL.LEVER(SR NO 15,18)	2	2	2
*21**	10.147.10.0.00	ASLY.EXH.LEVER(SR NO15,19)	2	2	2
*22	10.147.50.0.00	ASLY-VR LEVER-INLET(SR NO 16,17,20)	2	2	2
*23	10.147.60.0.00	ASLY.VR LEVER EXH(SR NO 16,17,21)	2	2	2
*24	12.007.50.0.00	R'BOX-COMPL.ASLY(SR NO 2,3 TO 23)	2	2	2
*24A	13.003.50.0.00	ROC'BOX COMPL.(SR NO 2A,3 TO 23)	2	2	2

*Parts not illustrated

**Parts not Supplied Loose

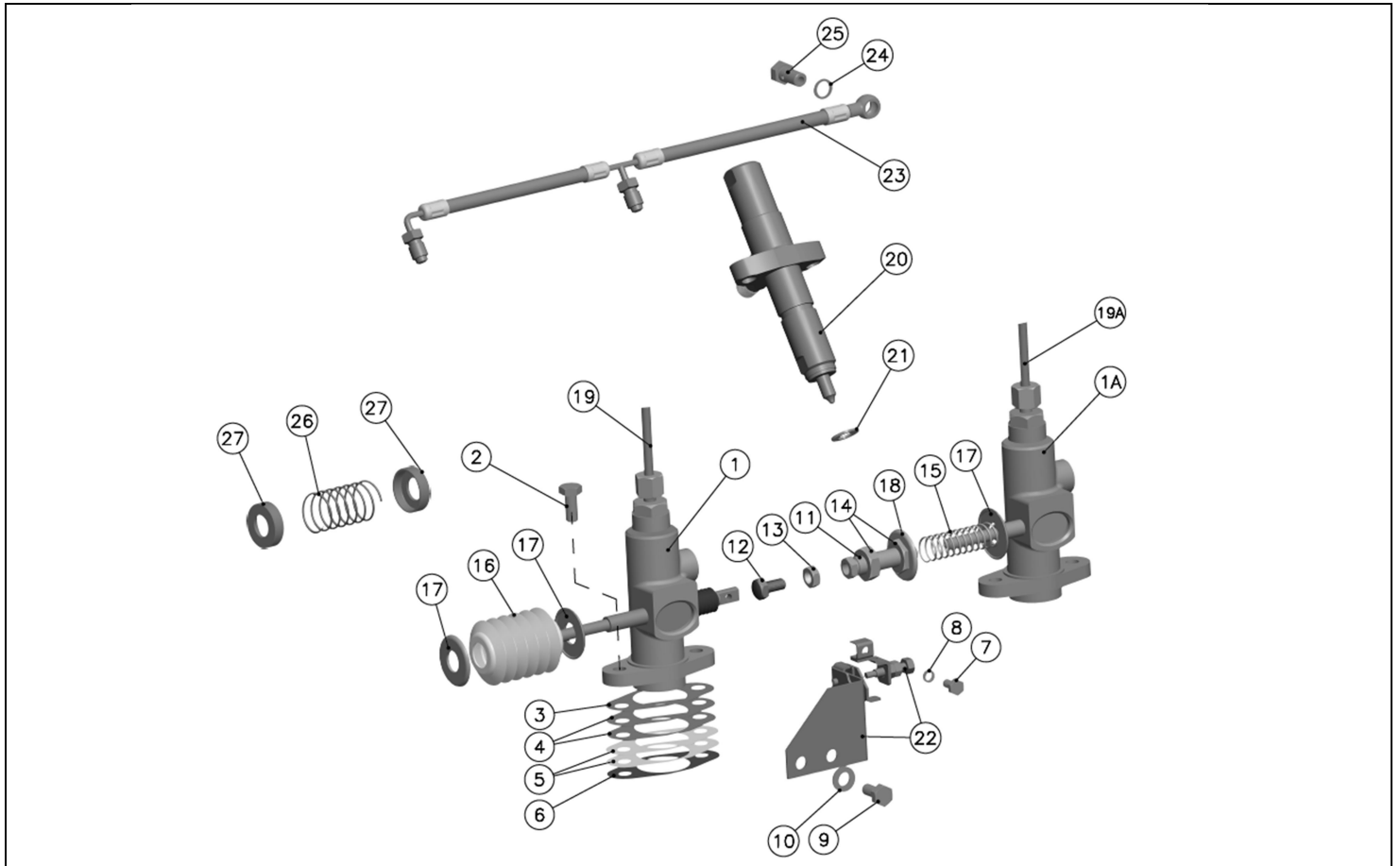


ROCKER BOX AND VALVE ROCKER LEVERS AND COVER

SR. NO	PART NO.	DESCRIPTION	QTY		
			DA20 D4.9012.02	DA20 D4.2013.01	DA20 D4.2013.02
25	10.033.04.0.00	JT-R'COVER	2	2	2
26	10.033.02.0.00	ROCKER BOX COVER	2	2	2

*Parts not illustrated

**Parts not Supplied Loose

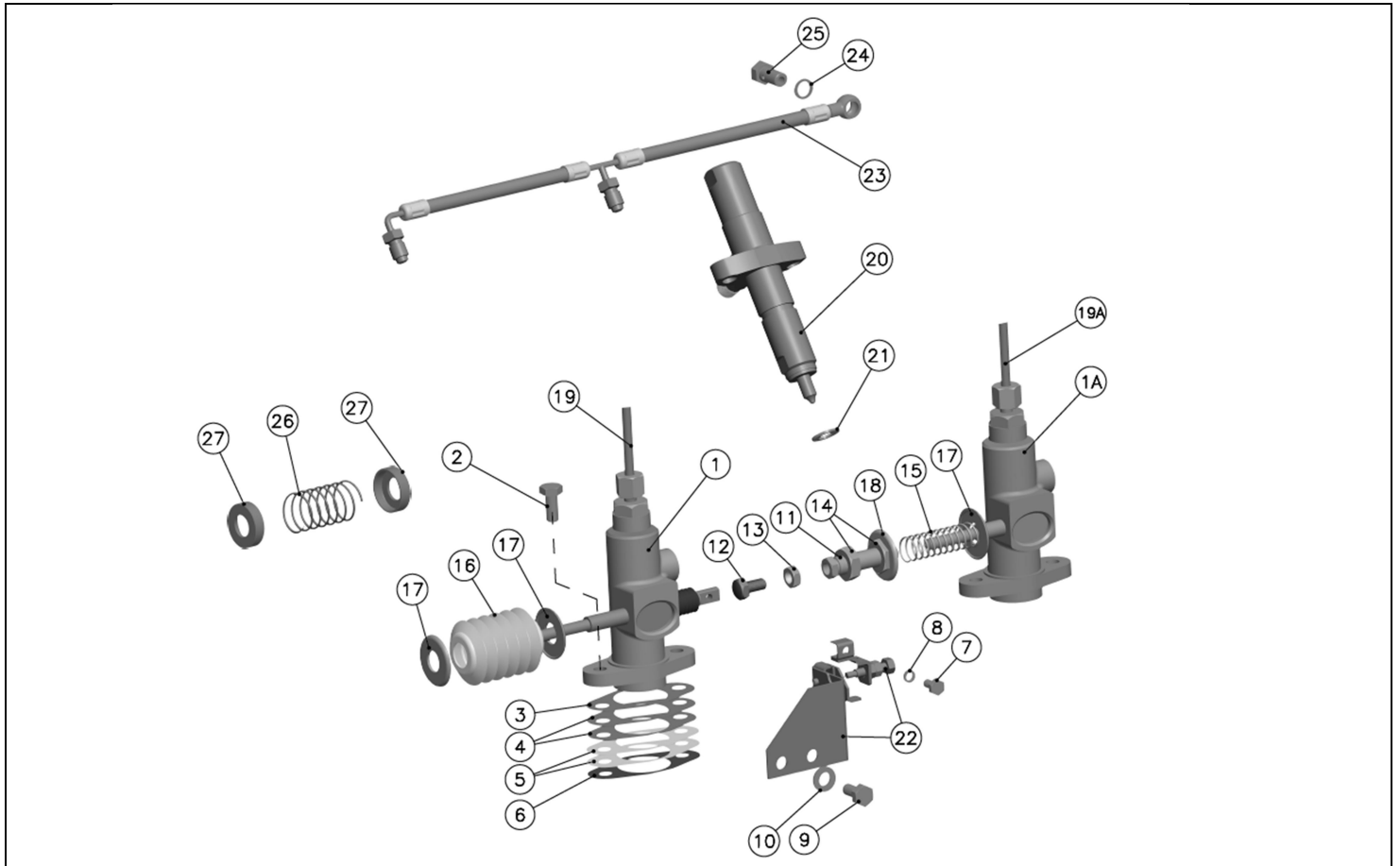


FUEL PUMP, INJECTOR & H.P. PIPE, L.O. PIPE, RETURN SPRING

SR. NO	PART NO.	DESCRIPTION	QTY		
			DA20 D4.9012.02	DA20 D4.2013.01	DA20 D4.2013.02
1	D1.019.10.0.00	FUEL PUMP	1	1	1
1A	D1.014.10.0.00	FUEL PUMP	1	1	1
2	50.014.02.005	SET SCREW - 5/16"BSFX3/4"L - 8.8	4	4	4
3	10.027.34.0.00	JOINT B'WEEN FP BKT. & SHIMS	2	2	2
4	10.027.29.0.00	JT-0.005"(AL)	4	4	4
5	10.027.11.0.00	JT-0.010"(AL)	4	4	4
6	10.027.12.0.00	JT-0.015"(AL)	2	2	2
7	50.003.05.010	SET SCREW - M5X0.8X10 - 8.8	1	1	1
8	50.505.05.000	SPRING WASHER - M5	1	1	1
9	50.014.02.004	SET SCREW - 5/16"BSFX5/8"L - 8.8	2	2	2
10	50.507.08.000	PLAIN PUNCHED WASHER - M8	2	2	2
11	11.013.22.0.00	RACK ADJ.SCREW(TWIN FUEL PUMP LINKAGE)	1	1	1
12	11.013.23.0.00	SET SCREW	1	1	1
13	50.016.02.000	LOCK NUT - 5/16"BSF NORMAL CLASS - GR.P	1	3	1
14	50.016.05.000	LOCK NUT - 1/2"BSF NORMAL CLASS - GR.P	2	2	2
15	11.103.01.0.00	SPEEDER SPRING	-	1	-
16	10.027.07.0.00	DUST COVER FOR SPRING	-	2	-
17	10.027.08.0.00	COLLAR FOR SPEED.SPRING(BIG BORE)	-	3	-
18	10.027.09.0.00	COLLAR FOR SPEED.SPRING (SMALL BORE)	-	1	-
19	13.002.10.0.00	HIGH PR.PIPE	1	1	1
19A	12.069.10.0.00	HIGH PR.PIPE	1	1	1
20	10.029.10.0.00	INJECTOR ASSLY	2	2	2
21	10.029.07.0.00	WASHER FOR INJECTOR	2	2	2
22	10.710.10.0.00	OVERLOAD STOPPER ASSLY WITH BRACKET	1	1	1
23	11.023.20.0.00	LEAK OFF PIPE	1	1	1
24	50.508.07.000	COPPER WASHER (10X14)	2	2	2

*Parts not illustrated

**Parts not Supplied Loose

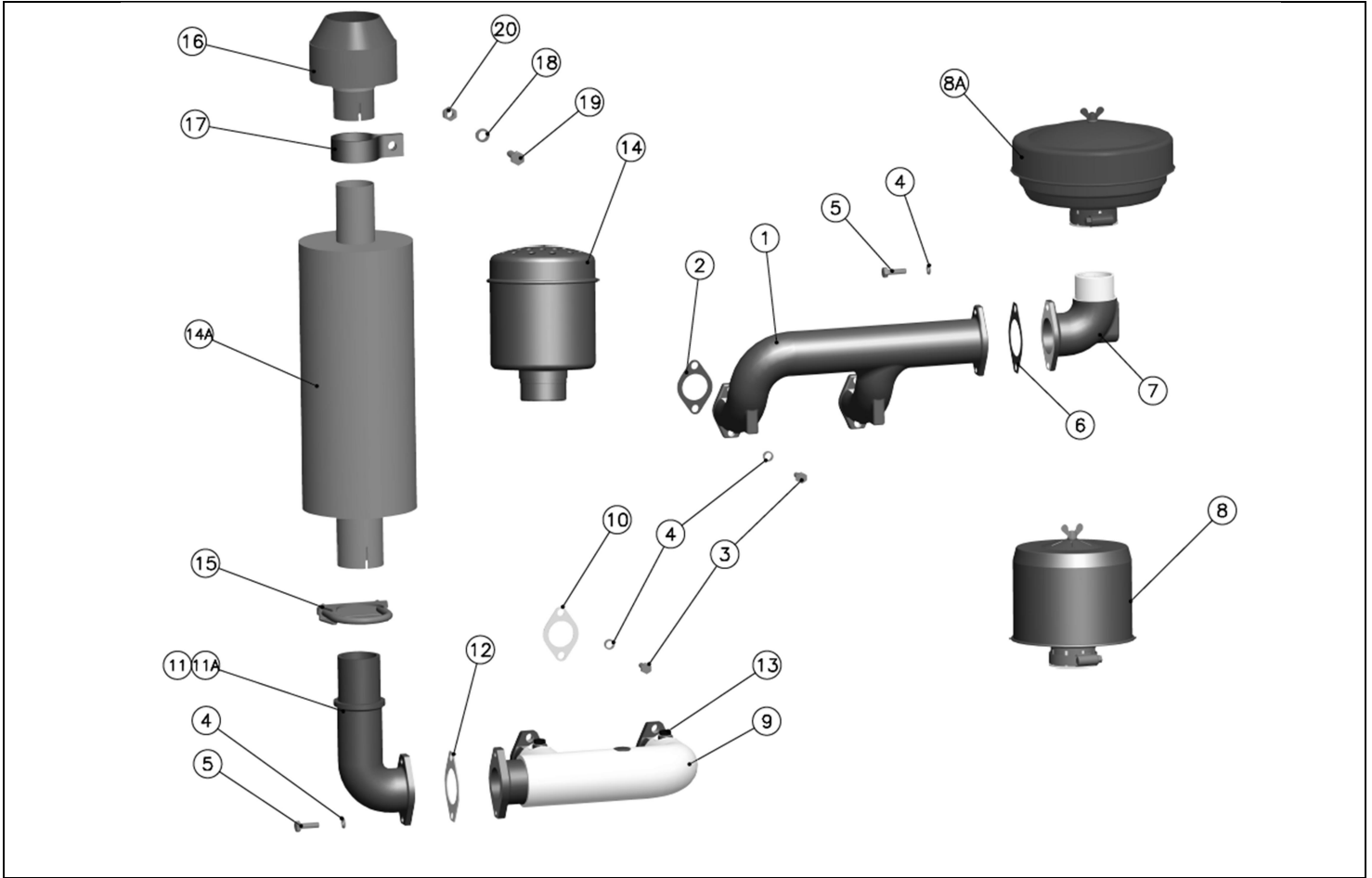


FUEL PUMP, INJECTOR & H.P. PIPE, L.O. PIPE, RETURN SPRING

SR. NO	PART NO.	DESCRIPTION	QTY		
			DA20 D4.9012.02	DA20 D4.2013.01	DA20 D4.2013.02
25	50.504.02.000	BANJO BOLT - M10X1.5	1	1	1
26	10.178.01.0.00	SPEEDER SPRING (1800 RPM)	1	-	1
27	D1.020.02.0.00	COLLAR FOR SPEEDER SPRING(BIG BORE)	2	-	2

*Parts not illustrated

**Parts not Supplied Loose

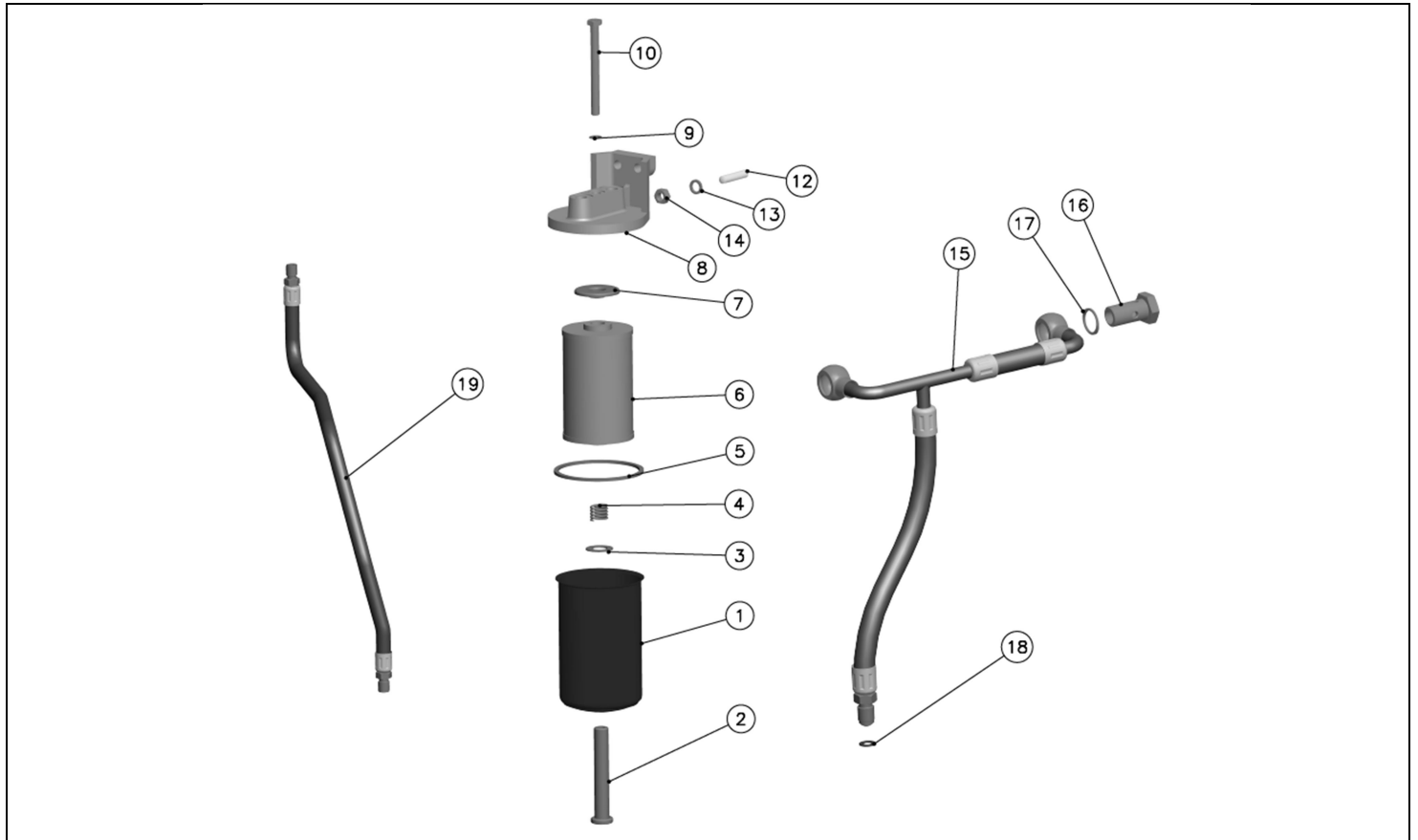


AIR INLET MANIFOLD, EXHAUST MANIFOLD & SILENCER AND AIR CLEANER

SR. NO	PART NO.	DESCRIPTION	QTY		
			DA20 D4.9012.02	DA20 D4.2013.01	DA20 D4.2013.02
1	D4.007.04.0.00	AIR INLET MANIFOLD	1	1	1
2	10.042.03.0.00	JOINT FOR AIR INLET MANIFOLD	2	2	2
3	50.014.02.005	SET SCREW - 5/16"BSFX3/4"L - 8.8	8	8	8
4	50.505.08.000	SPRING WASHER - M8	10	10	10
5	50.014.02.007	SET SCREW - 5/16"BSFX1"L - 8.8	4	4	4
6	D4.007.02.0.00	JOINT-ADAPTOR INLET M'FOLD	1	1	1
7	21.140.01.0.00	ADAPTOR AIR INLET MANIFOLD	1	1	1
8	13.046.10.0.00	AIR CLEANER ASSLY	1	-	-
8A	18.072.04.0.00	AIR CLEANER ASSLY	-	1	1
9	D4.008.01.0.00	EXH.M'FOLD-LAGGED	1	1	1
10	10.039.02.0.00	EXHAUST GASKET	2	2	2
11	19.148.01.0.00	ADAPTOR (F)-FOR B2 TYPE EXH. SILENCER	1	-	-
11A	D2.067.01.0.00	ADAPTOR FOR EXH.SILENCER	-	1	1
12	21.115.03.0.00	JOINT FOR ADAPTOR	1	1	1
13	50.014.02.003	SET SCREW - 5/16"BSFX1/2"L - 8.8	-	2	2
14	11.059.02.0.00	EXHAUST SILENCER('B2')TYPE	1	-	-
14A	02.322.01.0.00	EXH.SILENCER	-	1	1
15	04.364.50.0.00	ASSLY OF CLAMP FOR EXHAUST SILENCER	-	1	1
16	02.322.03.0.00	RAIN CAP	-	1	1
17	34.042.02.0.00	CLIP FOR RAIN CAP MTG ON EXHAUST SILENCER	-	1	1
18	50.506.10.000	PLAIN MACHINED WASHER - M10	-	2	2
19	50.003.10.030	SET SCREW - M10X1.5X30 - 8.8	-	1	1
20	50.006.10.000	NUT - M10X1.5 - GR.8	-	1	1

*Parts not illustrated

**Parts not Supplied Loose

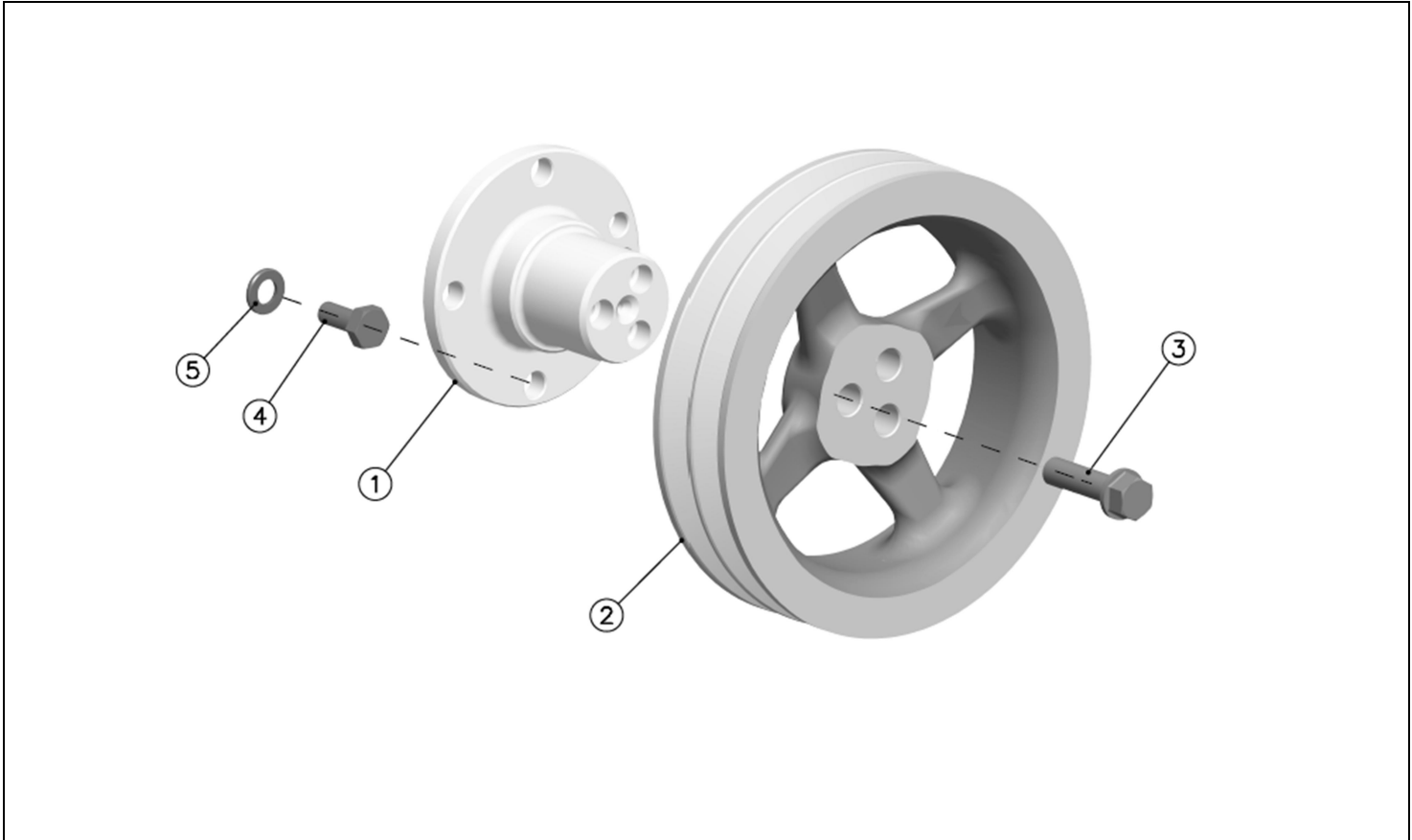


FUEL FILTER, FUEL PIPING

SR. NO	PART NO.	DESCRIPTION	QTY		
			DA20 D4.9012.02	DA20 D4.2013.01	DA20 D4.2013.02
1	11.203.03.0.00	BOWL-FUEL FILTER	1	1	1
2	11.203.07.0.00	ADAPTOR	1	1	1
3	11.203.14.0.00	M.S. WASHER FOR FUEL FILTER	1	1	1
4	11.203.05.0.00	SPRING	1	1	1
5	11.203.02.0.00	SEALING RING	1	1	1
6	11.018.04.0.00	FUEL FILTER ELEMENT	1	1	1
7	11.203.16.0.00	COLLAR	1	1	1
8	11.203.17.0.00	FUEL FILTER HEADER	1	1	1
9	11.203.13.0.00	WASHER FOR HEAD CASTING BOLT	1	1	1
10	50.002.08.085	SET BOLT - M8X1.25X85 - 8.8	1	1	1
*11	11.203.40.0.00	FUEL FILTER ASSLY (0.5 LITER) (SR NO 1 TO 10)	1	1	1
12	11.203.18.0.00	STUD FOR FUEL FILTER MOUNTING	2	2	2
13	50.505.08.000	SPRING WASHER - M8	2	2	2
14	50.015.02.000	NUT - 5/16" BSF NORMAL CLASS - GRADE P	2	2	2
15	21.261.02.0.00	FUEL PIPE-FUEL FILTER OUTLET TO FUEL PUMP INLET	1	1	1
16	50.504.04.000	BANJO BOLT - M14X1.5	2	2	2
17	50.508.11.000	COPPER WASHER	4	4	4
18	10.037.17.0.00	WASHER FOR FUEL PIPES	3	3	3
19	10.037.16.0.00	FUEL PIPE(TANK TO FILTER)	1	1	1
*20	13.027.06.0.00	CLIP FOR FUEL PIPE(TANK TO FILTER)	1	1	1

*Parts not illustrated

**Parts not Supplied Loose

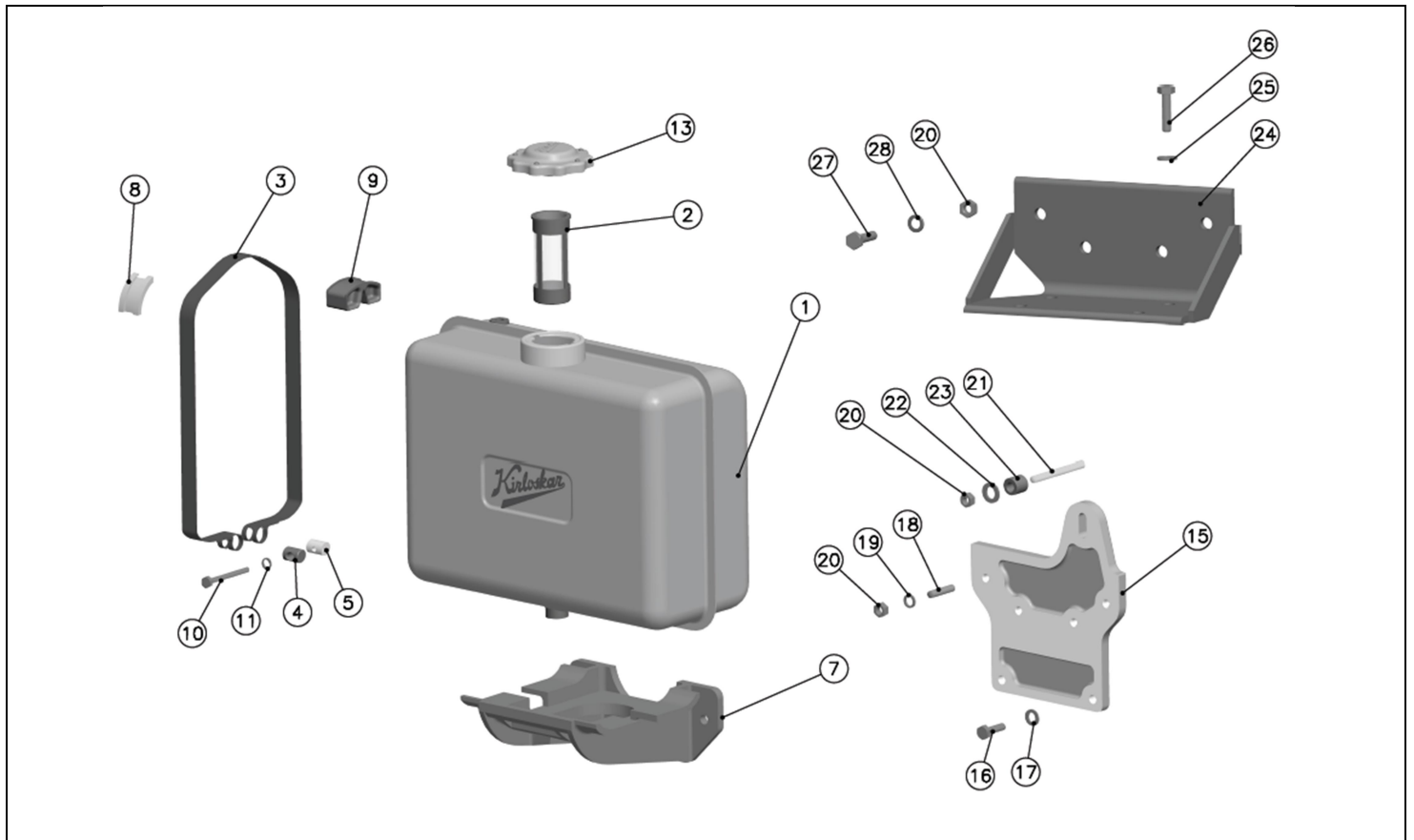


CRANK PULLEY

SR. NO	PART NO.	DESCRIPTION	QTY		
			DA20 D4.9012.02	DA20 D4.2013.01	DA20 D4.2013.02
1	21.267.06.0.00	EXTENSION SHAFT FOR CRANK PULLEY	1	1	1
2	D4.028.02.0.00	CRANK PULLEY	1	1	1
3	21.267.07.0.00	BOLT FOR CRANK PULLEY	3	3	3
4	50.057.02.005	SET SCREW-5/16"BSFX3/4"-10.9	4	4	4
5	10.020.03.0.00	HARD WASHER	4	4	4

*Parts not illustrated

**Parts not Supplied Loose

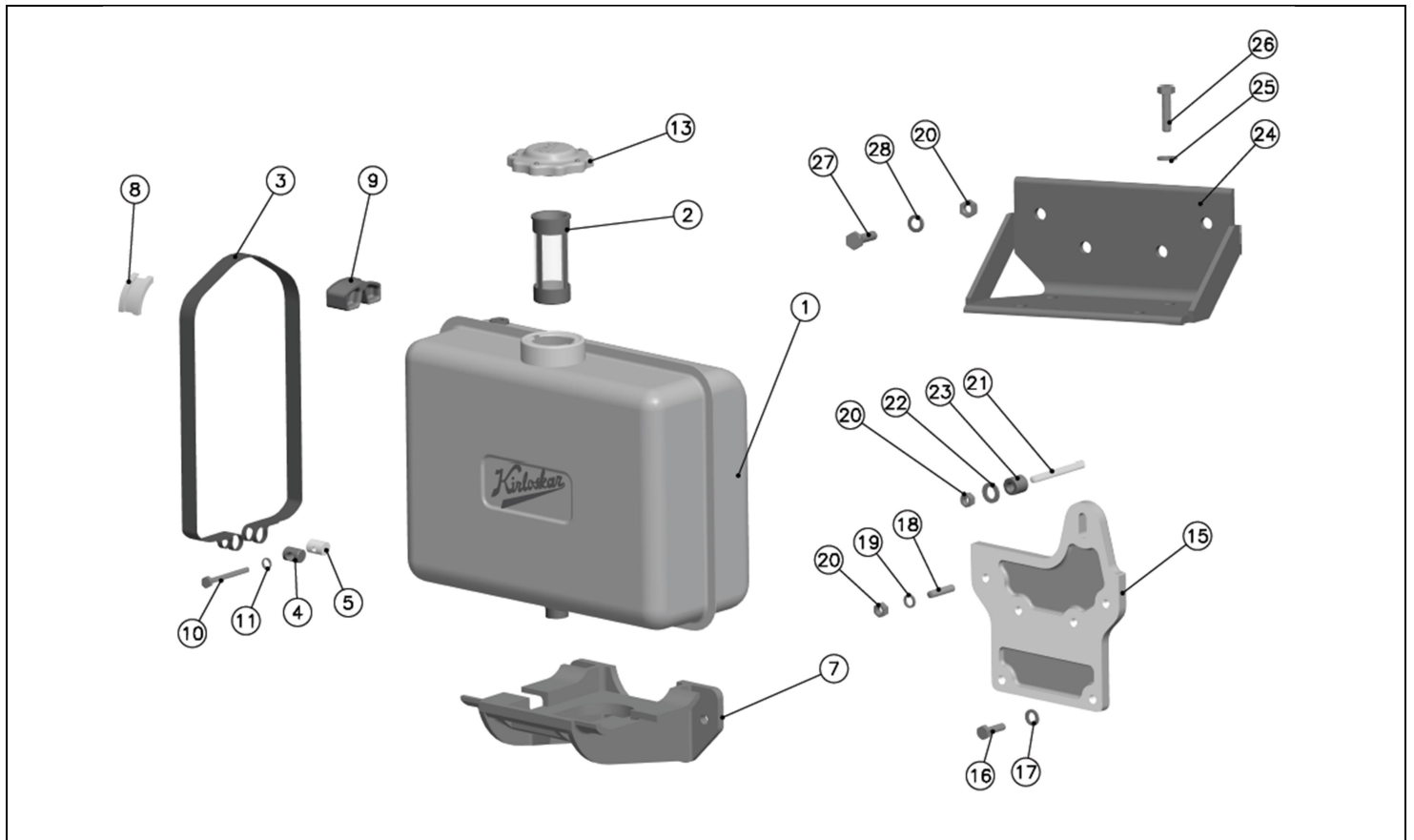


FUEL TANK & MOUNTING PLATE

SR. NO	PART NO.	DESCRIPTION	QTY		
			DA20 D4.9012.02	DA20 D4.2013.01	DA20 D4.2013.02
1**	18.051.01.0.00	FUEL TANK	1	1	1
2	18.011.26.0.00	FUEL OIL STRAINER	1	1	1
3	18.012.02.0.00	FUEL TANK STRAP	2	2	2
4	18.012.03.0.00	PEG FOR STRAP	2	2	2
5	18.012.04.0.00	THREADED PEG FOR STRAP	2	2	2
*6	18.051.30.0.00	FUEL TANK SUBASSLY (SR NO 1 TO 5)	1	1	1
7	18.012.01.0.00	FUEL TANK BRACKET	1	1	1
8	18.012.05.0.00	RUBBER PACKING FOR STRAP	8	8	8
9	18.012.06.0.00	SUPPORT FOR CLAMPING STRAP	2	2	2
10	50.014.01.015	SET SCREW - 1/4"BSFX2-1/4"L - 8.8	2	2	2
11	50.505.07.000	SPRING WASHER - M7	2	2	2
*12	18.051.50.0.00	FUEL TANK ASSEMBLY (SR NO 6 TO 11)	1	1	1
13**	18.051.60.0.00	CAP FOR FUEL TANK	1	1	1
*14	18.051.80.0.00	FUEL TANK ASSLY WITH CAP (SR NO 12,13)	1	1	1
15	20.260.01.0.00	PLATE-TANK MTG.FWE-ES(AIR COOLED)	1	1	-
16	50.014.02.007	SET SCREW - 5/16"BSFX1"L - 8.8	2	2	-
17	50.507.08.000	PLAIN PUNCHED WASHER - M8	2	2	-
18	10.013.08.0.00	STUD 5/16 INCH BSF X 1-5/16 INCH LONG	4	4	-
19	50.505.08.000	SPRING WASHER - M8	4	4	-
20	50.015.02.000	NUT - 5/16" BSF NORMAL CLASS - GRADE P	5	5	4
21	50.030.02.018	STUD 5/16"BSFX2.7/8" GRADE R	1	1	-
22	50.507.10.000	PLAIN PUNCHED WASHER - M10	1	1	-
23	12.169.11.0.00	SPACER FOR ADAPTOR PLATE (FUEL TANK MTG)	1	1	-
24	D4.013.01.0.00	BKT.FOR FUEL TANK MTG. ON BELL HFG	-	-	1
25	50.506.10.000	PLAIN MACHINED WASHER - M10	-	-	4
26	50.014.03.009	SET SCREW - 3/8"BSFX1-1/4"L - 8.8	-	-	4

*Parts not illustrated

**Parts not Supplied Loose

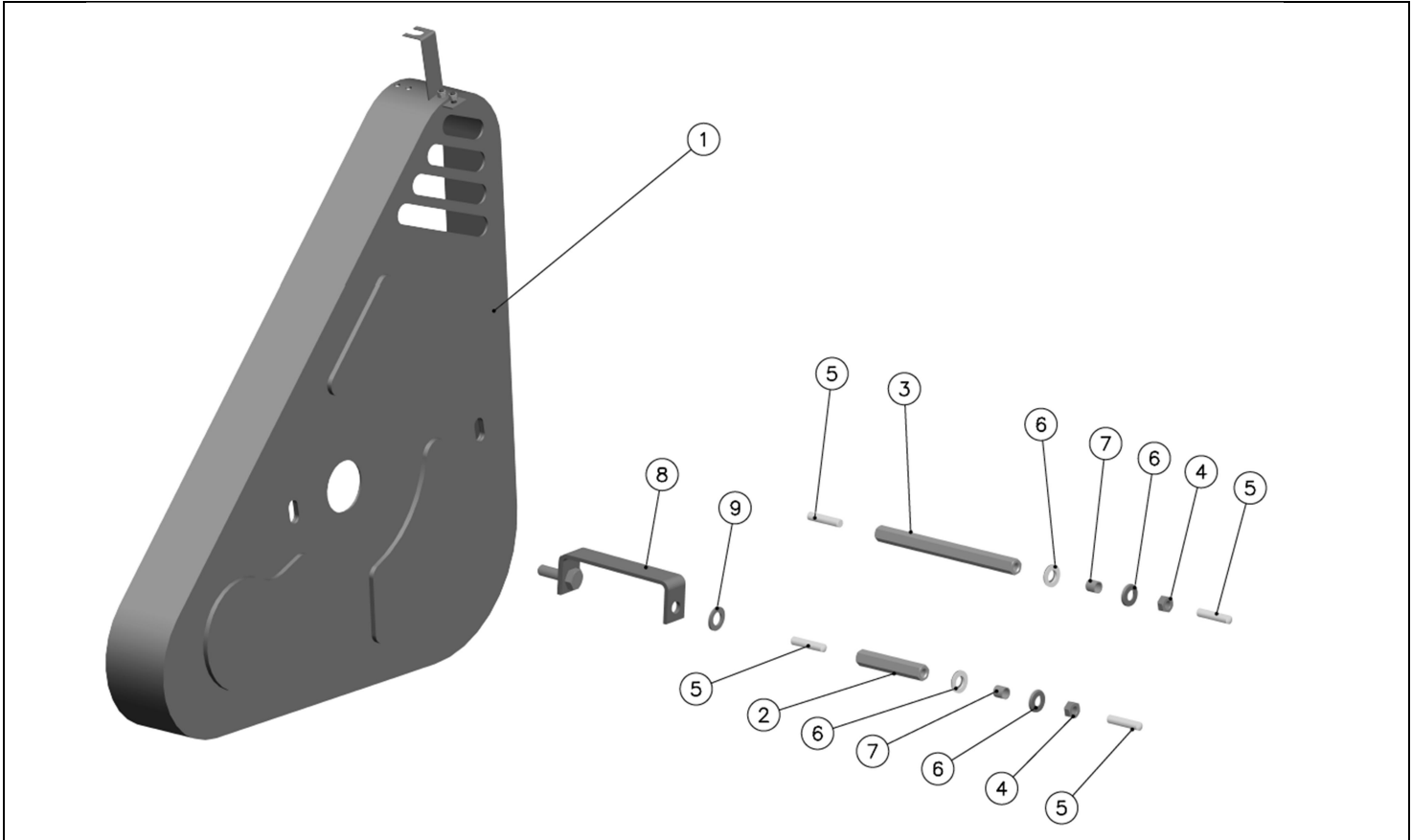


FUEL TANK & MOUNTING PLATE

SR. NO	PART NO.	DESCRIPTION	QTY		
			DA20 D4.9012.02	DA20 D4.2013.01	DA20 D4.2013.02
27	50.014.02.009	SET SCREW - 5/16"BSFX1-1/4"L - 8.8	-	-	4
28	50.506.08.000	PLAIN MACHINED WASHER - M8	-	-	4

*Parts not illustrated

**Parts not Supplied Loose

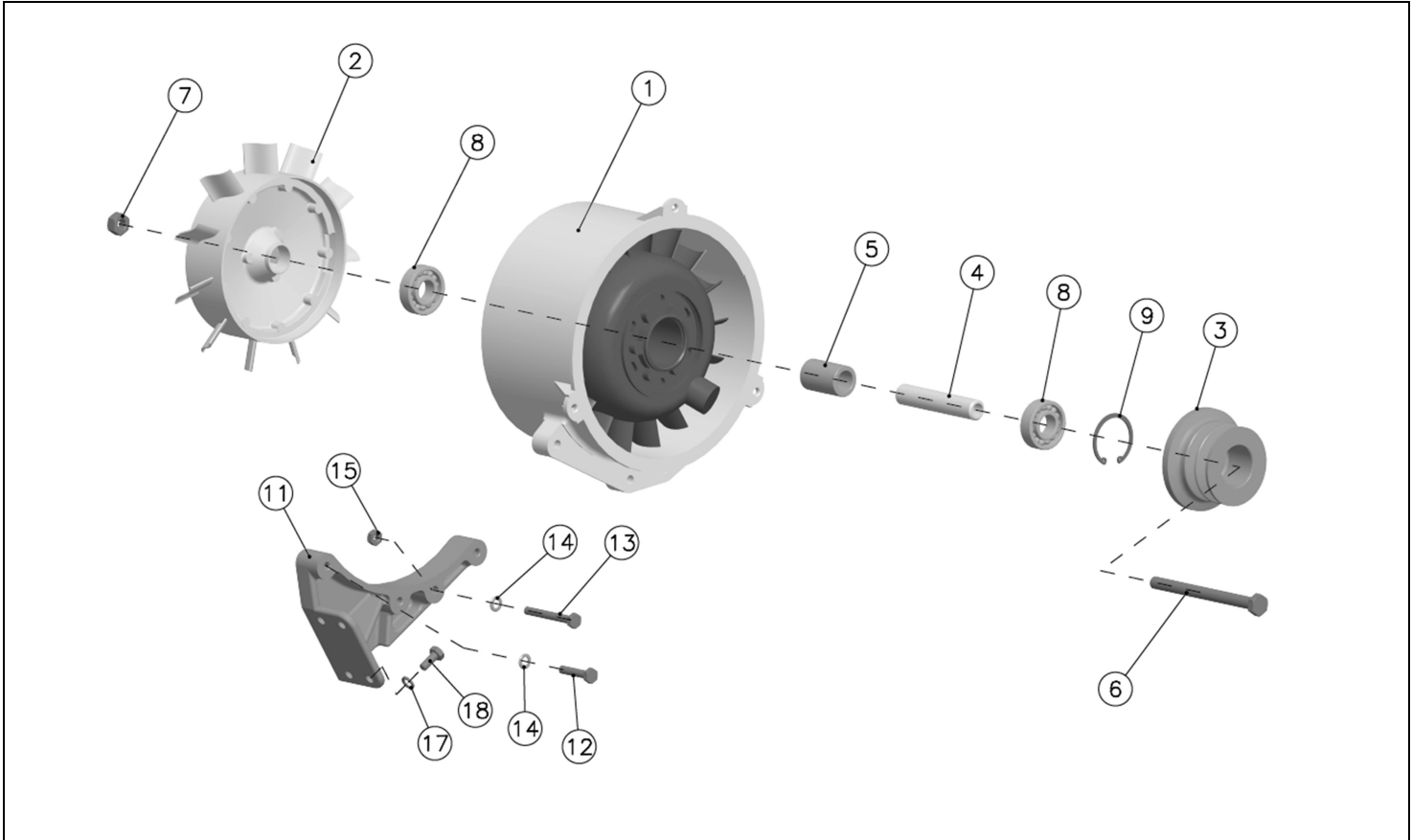


BELT GUARD

SR. NO	PART NO.	DESCRIPTION	QTY		
			DA20 D4.9012.02	DA20 D4.2013.01	DA20 D4.2013.02
1	D4.025.01.0.00	BELT GAURD(FIBER GLASS)	1	1	1
2	12.036.05.0.00	SP.STUD-BELT GUARD (SHORT)	1	1	1
3	D4.025.03.0.00	HEX SPACER FOR BELT GAURD	1	1	1
4	50.015.02.0.00	NUT - 5/16" BSF NORMAL CLASS - GRADE P	2	2	2
5	50.030.02.0.06	STUD 5/16"BSFX1.3/8" GRADE R	4	4	4
6	02.121.02.0.00	WASHER	4	4	4
7	02.121.03.0.00	SPACER TUBE	2	2	2
8	D4.025.02.0.00	BRACKET FOR BELT GAURD	1	1	1
9	50.507.08.0.00	PLAIN PUNCHED WASHER - M8	1	1	1

*Parts not illustrated

**Parts not Supplied Loose

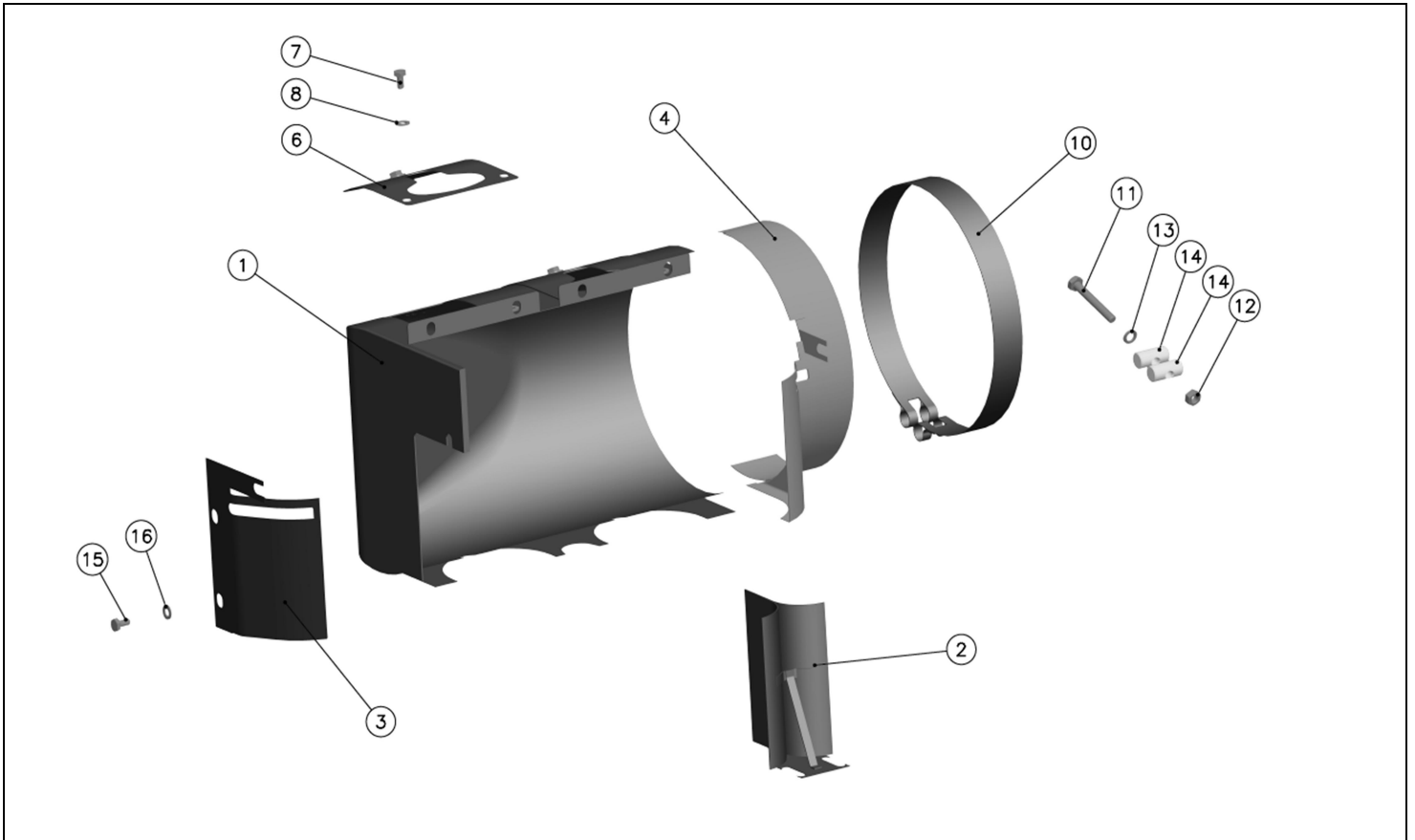


FAN BLOWER

SR. NO	PART NO.	DESCRIPTION	QTY		
			DA20 D4.9012.02	DA20 D4.2013.01	DA20 D4.2013.02
1	D4.023.20.0.00	ASSEMBLY OF FAN BODY & STATOR(ACWR ENGINE)	1	1	1
2	D4.023.04.0.00	IMPELLER (AL)(ACWR ENGINE)	1	1	1
3	D4.023.05.0.00	FAN PULLEY(69 P.C.D.)	1	1	1
4	D4.023.06.0.00	SPACER (INNER)	1	1	1
5	D4.023.07.0.00	SPACER (OUTER)	1	1	1
6	50.002.12.140	SET BOLT - M12X1.75X140 - 8.8	1	1	1
7	50.006.12.000	NUT - M12X1.75 - GR.8	1	1	1
8	D4.023.08.0.00	BALL BEARING - 6204-Z	2	2	2
9	50.502.47.000	CIRCLIP INTERNAL - 47 MM	1	1	1
*10	D4.023.10.0.00	COOLING BLOWER ASSEMBLY-COMPLETE(SR NO 1 TO 9)	1	1	1
11	D4.023.01.0.00	BRACKET FOR FAN BODY	1	1	1
12	50.014.02.011	SET SCREW - 5/16"BSFX1-1/2"L - 8.8	3	3	3
13	50.014.02.016	SET SCREW - 5/16"BSFX2-1/2"L - 8.8	1	1	1
14	50.507.08.000	PLAIN PUNCHED WASHER - M8	4	4	4
15	50.015.02.000	NUT - 5/16" BSF NORMAL CLASS - GRADE P	1	1	1
*16	D4.023.30.0.00	COOLING BLOWER ASSEMBLY WITH BRACKET	1	1	1
17	50.505.08.000.	SPRING WASHER - M8	4	4	4
18	50.014.02.005	SET SCREW - 5/16"BSFX3/4"L - 8.8	4	4	4

*Parts not illustrated

**Parts not Supplied Loose

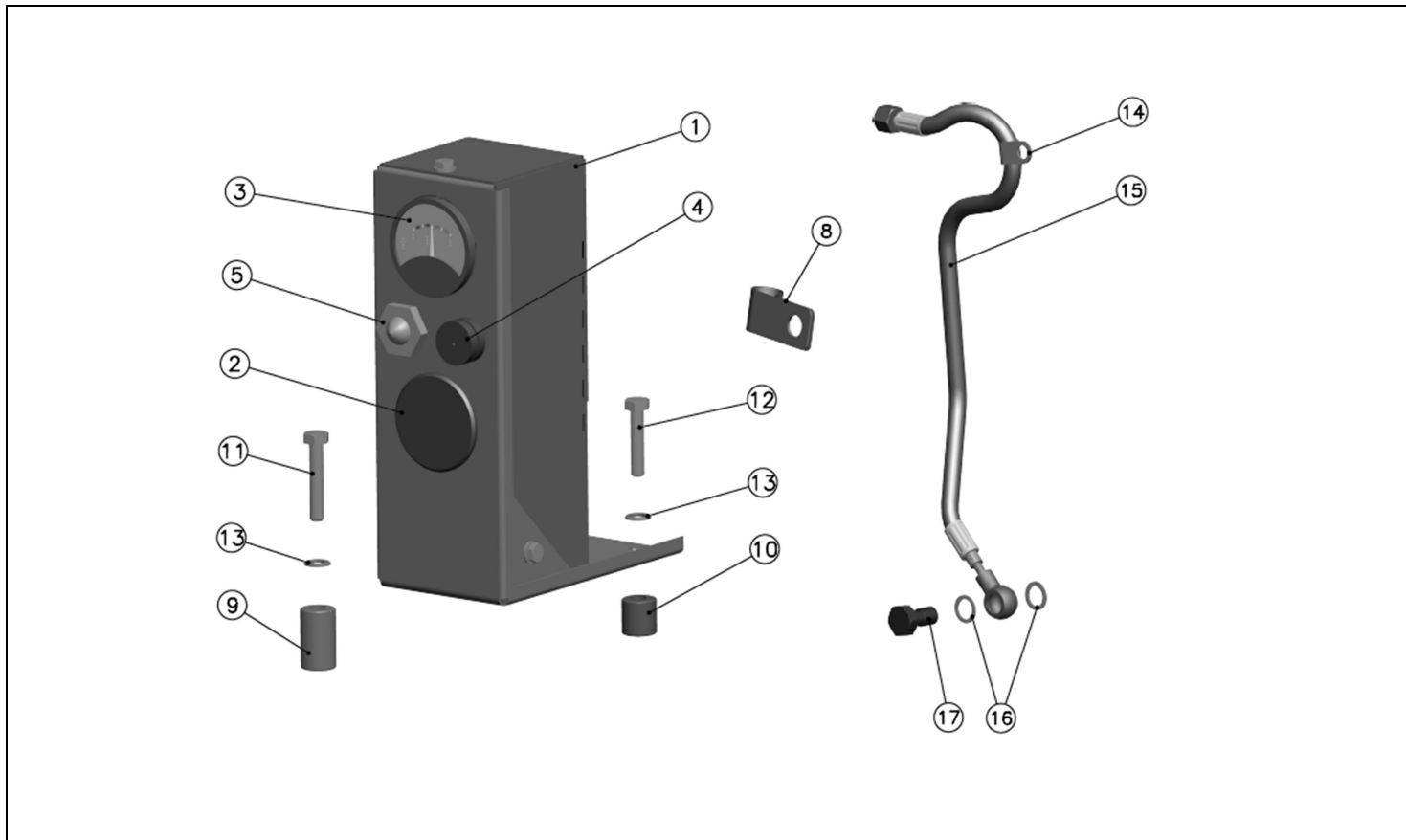


COWLING

SR. NO	PART NO.	DESCRIPTION	QTY		
			DA20 D4.9012.02	DA20 D4.2013.01	DA20 D4.2013.02
1	D4.006.01.0.00	MAIN COWLING	1	1	1
2	21.296.01.0.00	CENTRAL COWLING	1	1	1
3	21.003.04.0.00	SIDE COWLING (FWE)	1	1	1
4	D4.006.02.0.00	SIDE COVER COWLING (GEAR END)	1	1	1
*5	21.003.06.0.00	STRIP	1	1	1
6	D4.006.04.0.00	TOP COVER COWLING AT NOZZLE HOLDER	2	2	2
7	50.014.01.003	SET SCREW - 1/4"BSFX1/2"L - 8.8	10	10	10
8	50.507.07.000	PLAIN PUNCHED WASHER - M7	10	10	10
*9	D4.006.10.0.00	COWLING SET	1	1	1
10	12.022.02.0.00	CLAMPING STRAP FOR COWLING	1	1	1
11	50.013.02.016	SET BOLT - 5/16 INCH BSFX2-1/2 INCH LONG - 8.8	1	1	1
12	50.015.02.000	NUT - 5/16" BSF NORMAL CLASS - GRADE P	1	1	1
13	50.505.08.000	SPRING WASHER - M8	1	1	1
14	12.022.04.0.00	PEG FOR STRAP	2	2	2
15	50.014.02.004	SET SCREW - 5/16"BSFX5/8"L - 8.8	8	8	8
16	50.507.08.000	PLAIN PUNCHED WASHER - M8	10	10	10

*Parts not illustrated

**Parts not Supplied Loose

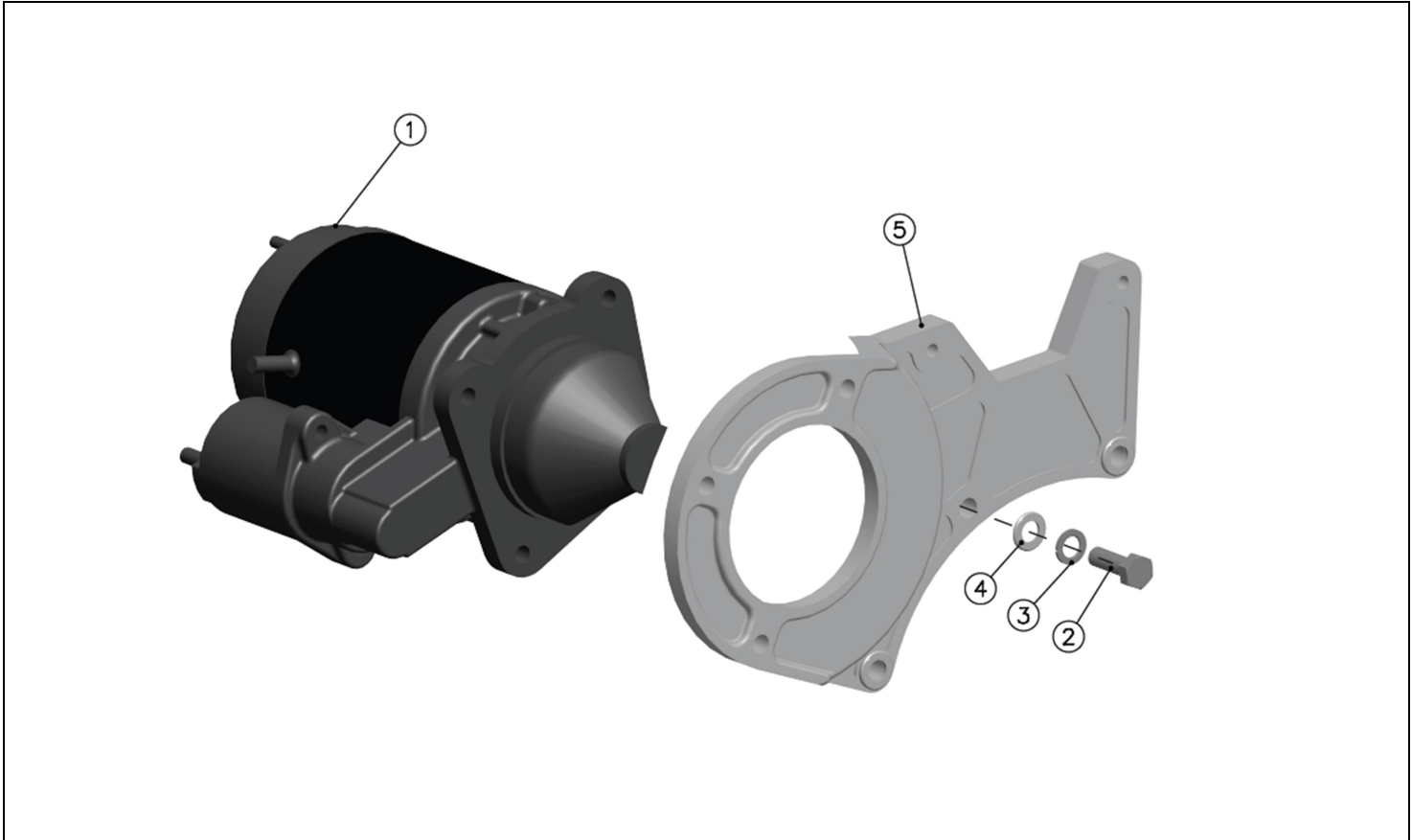


CONTROL PANEL & PRESSURE GAUGE

SR NO	PART NO.	DESCRIPTION	QTY		
			DA20 D4.9012.02	DA20 D4.2013.01	DA20 D4.2013.02
1	D2.104.02.0.00	PANEL BOARD , CLOSED TYPE	-	1	1
2	46.244.01.0.00	LUB OIL PRESSURE GAUGE (0-10 KG/SQ CM)	-	1	1
3	03.124.01.0.00	AMMETER -(50-0-50)AMPS	-	1	1
4	49.135.02.0.00	STARTER IGNITION SWITCH 3WAY	-	1	1
5	20.244.01.0.00	CHARGING LAMP	-	1	1
*6	D2.104.20.0.00	WIRING HARNESS	-	1	1
*7	D2.104.10.0.00	CONTROL PANEL & WIRING HARNESS ASSLY. (SR NO 1 TO 6)	-	1	1
8	34.151.03.0.00	CLIP FOR FLEXIBLE PIPE WITH SLEEVE	-	4	4
9	12.081.02.0.00	BUSH FOR PANEL BOARD (LONG)	-	2	2
10	12.081.03.0.00	BUSH FOR PANEL BOARD (SHORT)	-	2	2
11	50.013.02.011	SET BOLT - 5/16 INCH BSFX1-1/2 INCH LONG - 8.8	-	2	2
12	50.013.02.013	SET BOLT - 5/16"BSFX1-3/4"L - 8.8	-	2	2
13	50.506.08.000	PLAIN MACHINED WASHER - M8	-	4	4
14	12.081.05.0.00	CLIP	-	1	1
15	19.165.02.0.00	PIPE-PR GAUGE	-	1	1
16	50.508.12.000	COPPER WASHER (14X20)	-	2	2
17	50.538.03.000	BANJO BOLT - 1/4" BSP	-	1	1

*Parts not illustrated

**Parts not Supplied Loose

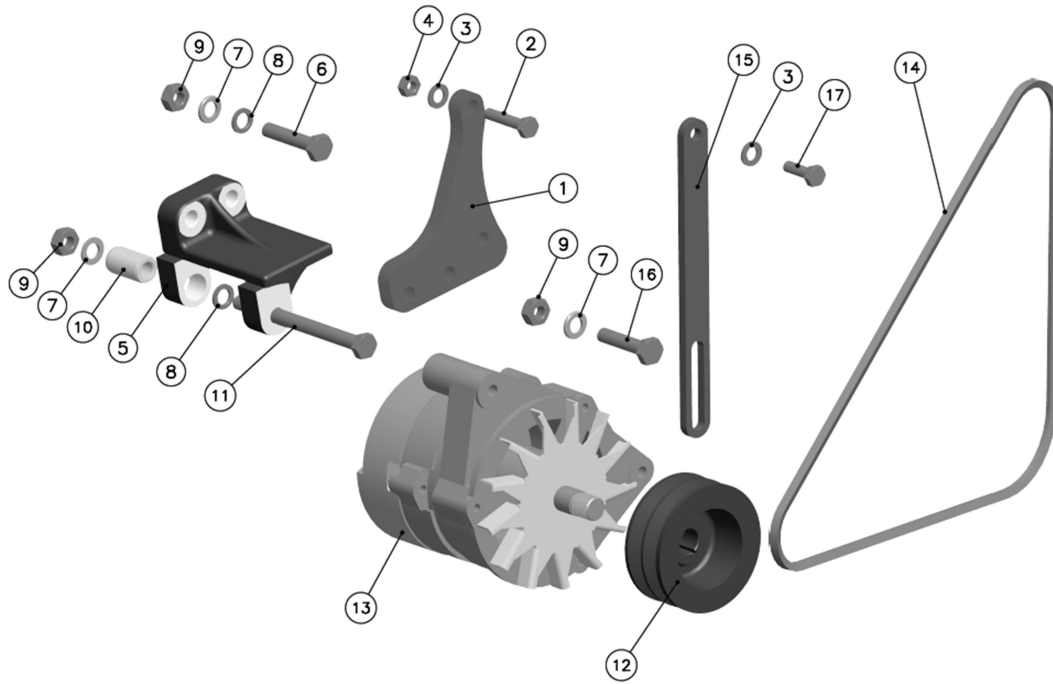


STARTER & STARTER BRACKET

SR. NO	PART NO.	DESCRIPTION	QTY		
			DA20 D4.9012.02	DA20 D4.2013.01	DA20 D4.2013.02
1	46.389.01.0.00	STARTER	1	1	1
2	50.014.03.008	SET SCREW - 3/8 " BSFX1-1/8" LONG - 8.8	3	3	-
3	50.505.10.000	SPRING WASHER - M10	3	3	-
4	50.506.10.000	PLAIN MACHINED WASHER - M10	3	3	-
5	11.049.06.0.00	STARTER BRACKET (REDUCED WEIGHT)	1	1	-
*6	50.014.02.005	SET SCREW - 5/16"BSFX3/4"L - 8.8	4	4	-
*7	50.505.08.000	SPRING WASHER - M8	4	4	-

*Parts not illustrated

**Parts not Supplied Loose

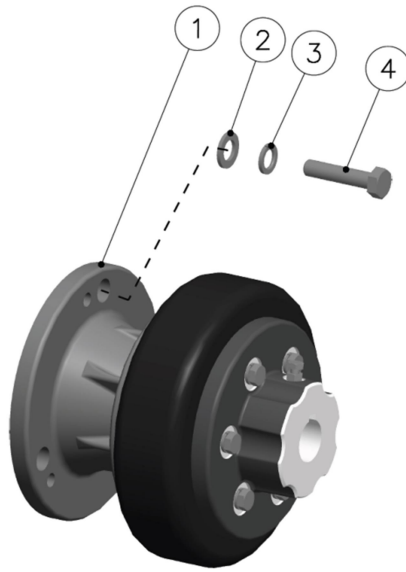


ALTERNATOR & MOUNTING

SR. NO	PART NO.	DESCRIPTION	QTY		
			DA20 D4.9012.02	DA20 D4.2013.01	DA20 D4.2013.02
1	21.255.01.0.00	SUPPORT FOR ALT.BRACKET	1	1	1
2	50.014.02.011	SET SCREW - 5/16"BSFX1-1/2"L - 8.8	2	2	2
3	50.507.08.000	PLAIN PUNCHED WASHER - M8	3	3	3
4	50.015.02.000	NUT - 5/16" BSF NORMAL CLASS - GRADE P	2	2	2
5	21.255.06.0.00	ALTERNATOR BRACKET	1	1	1
6	50.002.10.065	SET BOLT - M10X1.5X50 - 8.8	2	2	2
7	50.506.10.000	PLAIN MACHINED WASHER - M10	4	4	4
8	50.505.10.000	SPRING WASHER - M10	3	3	3
9	50.006.10.000	NUT - M10X1.5 - GR.8	4	4	4
10	48.067.04.0.00	BUSH FOR ALTERNATOR (IN BRACKET) 32MM	1	1	1
11	48.067.03.0.00	DOWEL BOLT FOR ALTERNATOR - M10 X 130 LG	1	1	1
12	21.255.02.0.00	PULLEY FOR ALTERNATOR(2 GROOVE)	1	1	1
13	D2.059.01.0.00	ALTERNATOR 12 V ,35 AMP	1	1	1
14	D2.164.01.0.00	V BELT A-55	2	2	2
15	21.255.03.0.00	LEVER-BELT TENSION FOR ALT	1	1	1
16	50.002.10.045	SET BOLT - M10X1.5X45 - 8.8	1	1	1
17	50.014.02.007	SET SCREW - 5/16"BSFX1"L - 8.8	1	1	1
*18	D4.026.01.0.00	SPACER FOR ALTERNATOR BRACKET	1	1	1

*Parts not illustrated

**Parts not Supplied Loose

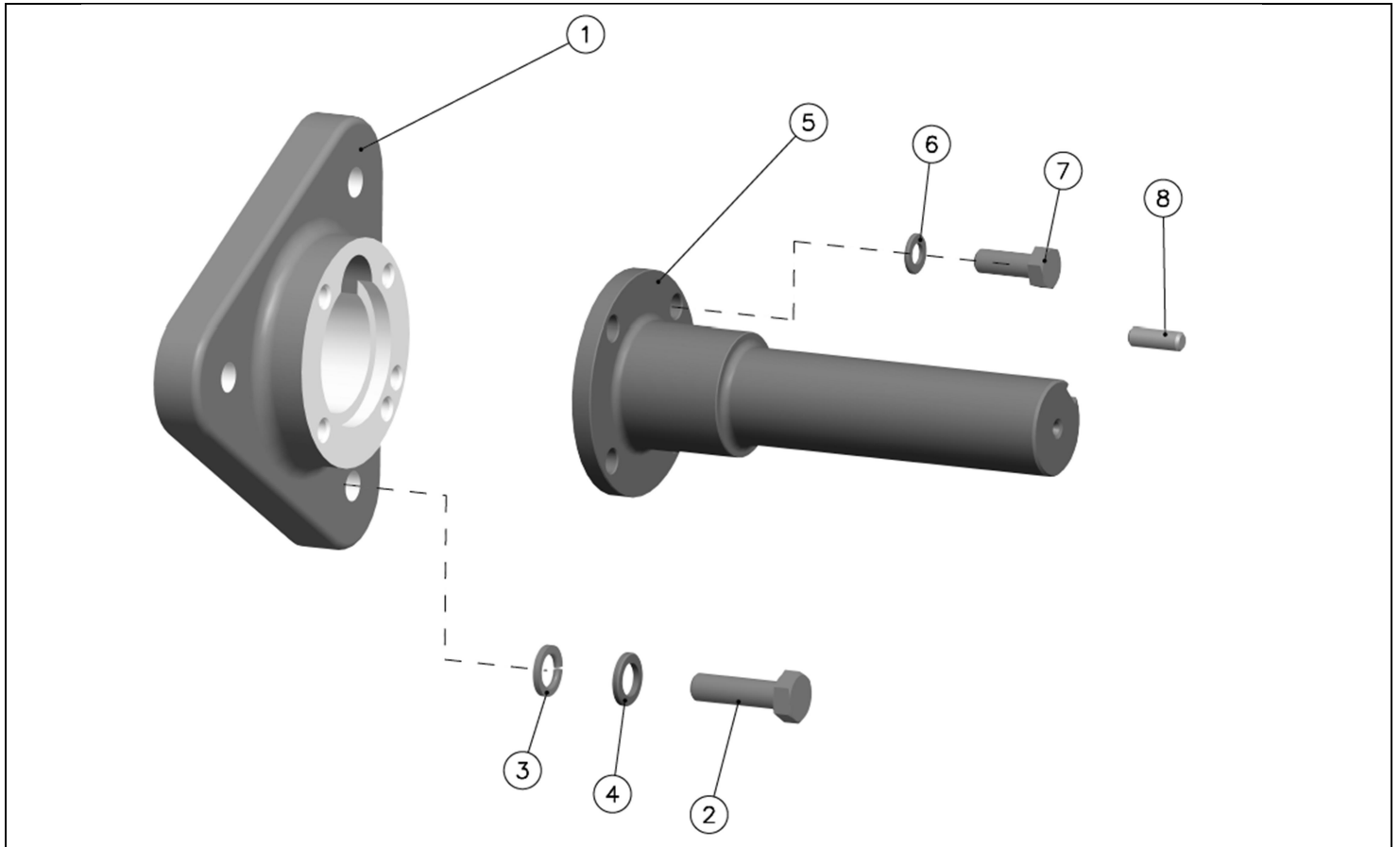


TYRE TYPE COUPLING

SR. NO	PART NO.	DESCRIPTION	QTY		
			DA20 D4.9012.02	DA20 D4.2013.01	DA20 D4.2013.02
1	D2.022.10.0.00	TYRE TYPE COUPLING 28 DIA BORE	1	-	-
2	50.507.12.000	PLAIN PUNCHED WASHER - M12	3	-	-
3	50.505.12.000	SPRING WASHER - M12	3	-	-
4	50.014.04.014	SET SCREW - 7/16"BSFX2"L - 8.8	3	-	-
*5	50.015.04.000	NUT - 7/16 INCH BSF NORMAL CLASS - GRADE P	3	-	-

*Parts not illustrated

**Parts not Supplied Loose

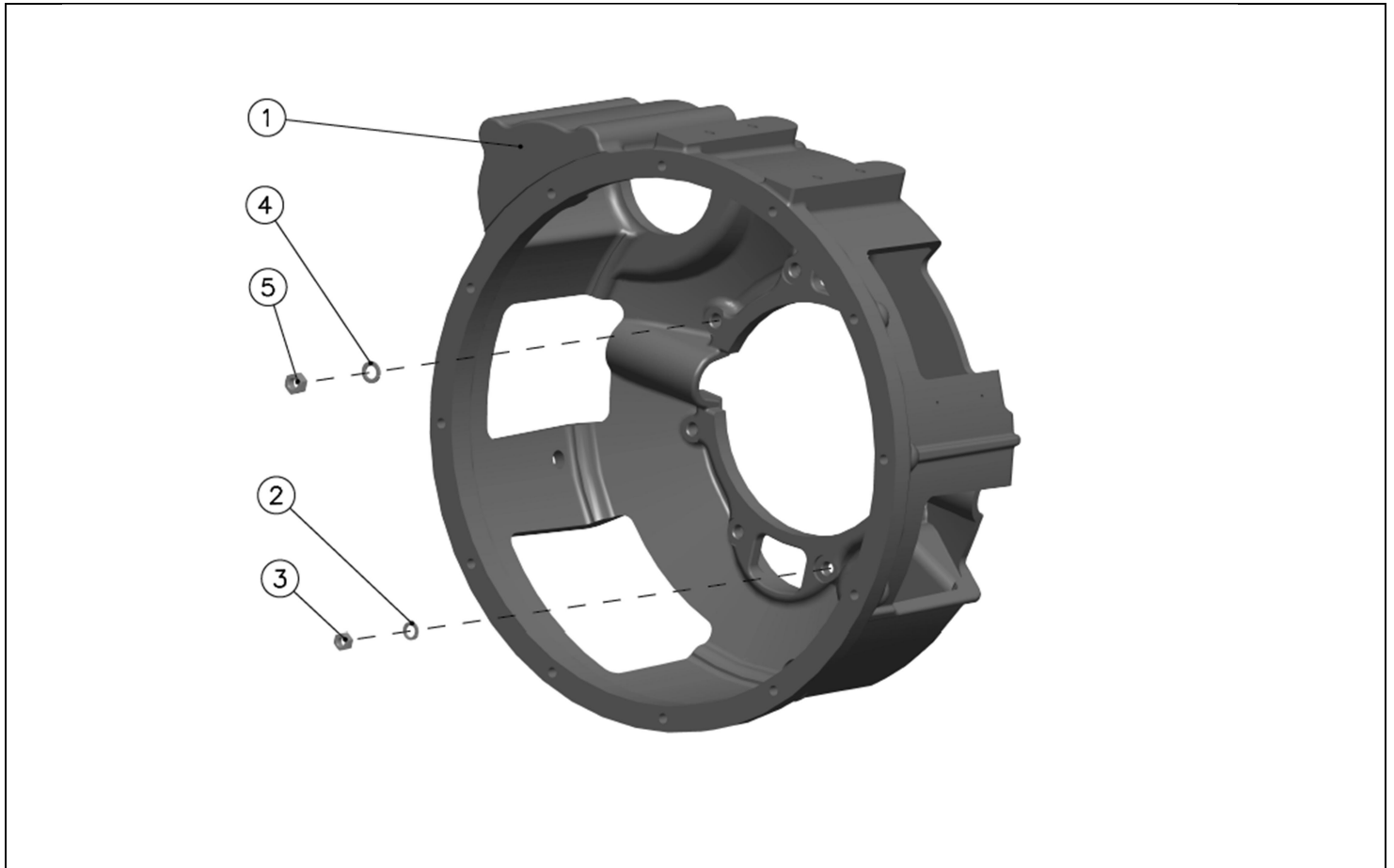


FLANGE & EXTENSION SHAFT

SR. NO	PART NO.	DESCRIPTION	QTY		
			DA20 D4.9012.02	DA20 D4.2013.01	DA20 D4.2013.02
1	12.190.01.0.00	FLANGE FOR EXTENSION SHAFT	-	1	-
2	50.013.04.011	SET BOLT - 7/16"BSFX1-1/2"L - 8.8	-	3	-
3	50.505.12.000	SPRING WASHER - M12	-	3	-
4	50.506.12.000	PLAIN MACHINED WASHER - M12	-	3	-
5	10.062.01.0.00	EXTENSION SHAFT(HSD)(7.625"LONG)	-	1	-
6	10.020.03.0.00	HARD WASHER (F)	-	4	-
7	50.057.03.007	SET SCREW 3/8"BSFX1"-10.9	-	4	-
8	11.169.05.0.00	DOWEL	-	1	-

*Parts not illustrated

**Parts not Supplied Loose

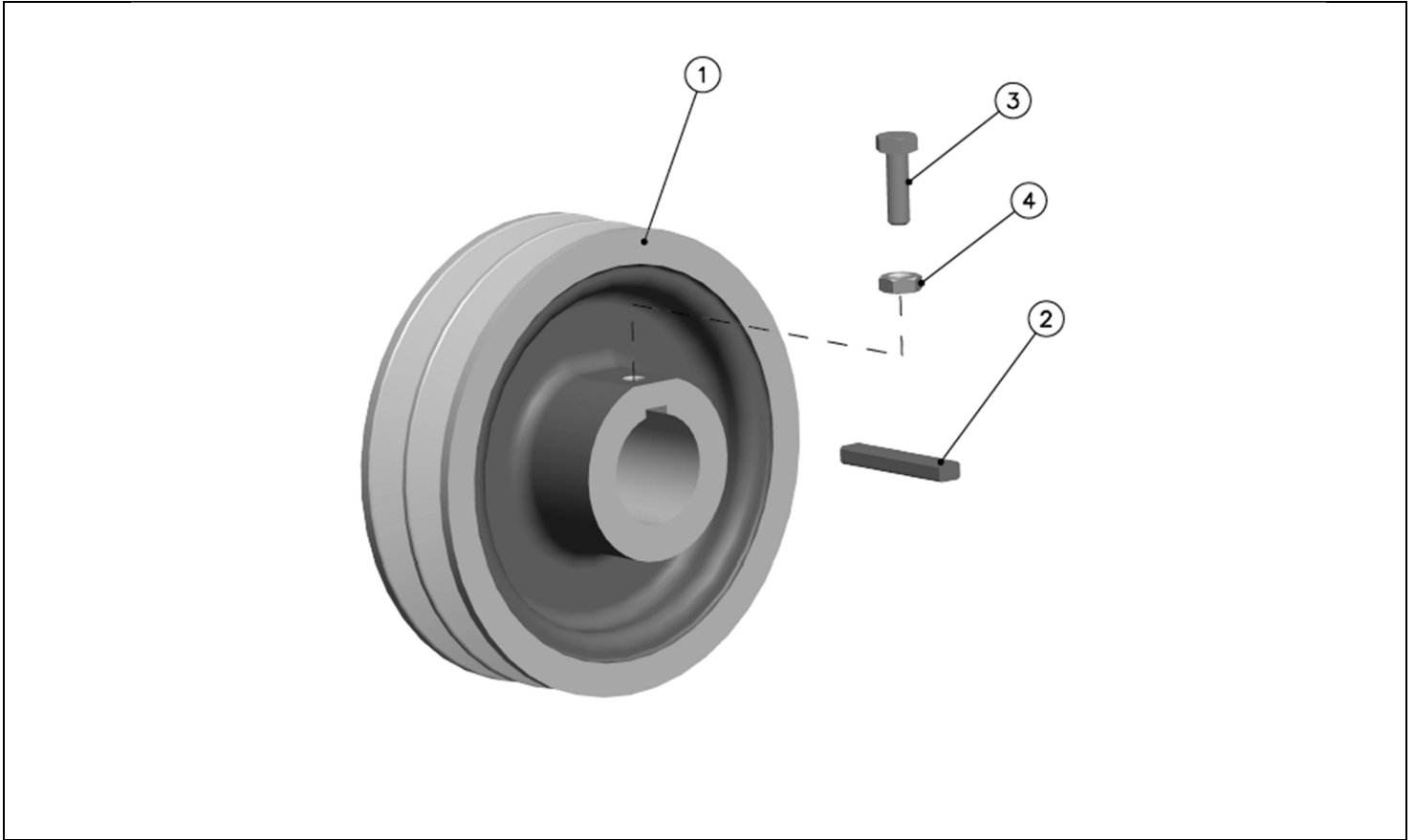


SAE-3 FLYWHEEL HSG

SR. NO	PART NO.	DESCRIPTION	QTY		
			DA20 D4.9012.02	DA20 D4.2013.01	DA20 D4.2013.02
1	D4.121.01.0.00	FLYWHEEL HOUSING SAE3 - REDUCED WEIGHT	-	-	1
2	50.505.08.000	SPRING WASHER - M8	-	-	5
3	50.015.02.000	NUT - 5/16" BSF NORMAL CLASS - GRADE P	-	-	5
4	50.505.10.000	SPRING WASHER - M10	-	-	3
5	50.015.03.000	NUT - 3/8 INCH BSF NORMAL CLASS - GRADE P	-	-	3

*Parts not illustrated

**Parts not Supplied Loose

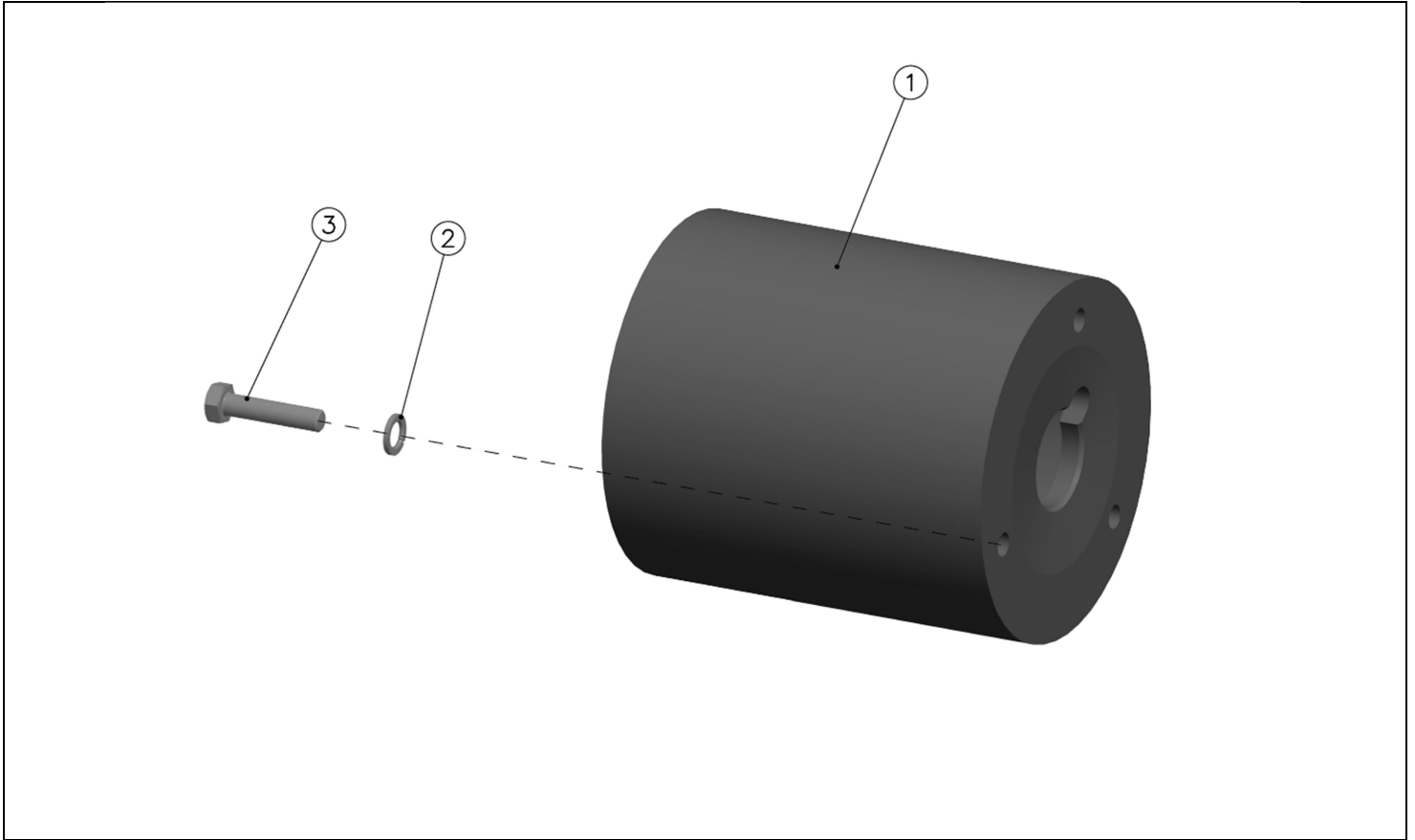


2 GROOVE PULLEY

SR. NO	PART NO.	DESCRIPTION	QTY		
			DA20 D4.9012.02	DA20 D4.2013.01	DA20 D4.2013.02
1	10.130.03.0.00	V-PULLEY 6" PCD BOSS TYPE	-	1	-
2	10.130.01.0.00	KEY	-	1	-
3	50.014.02.007	SET SCREW - 5/16"BSFX1"L - 8.8	-	1	-
4	50.016.02.000	LOCK NUT - 5/16"BSF NORMAL CLASS - GR.P	-	1	-

*Parts not illustrated

**Parts not Supplied Loose

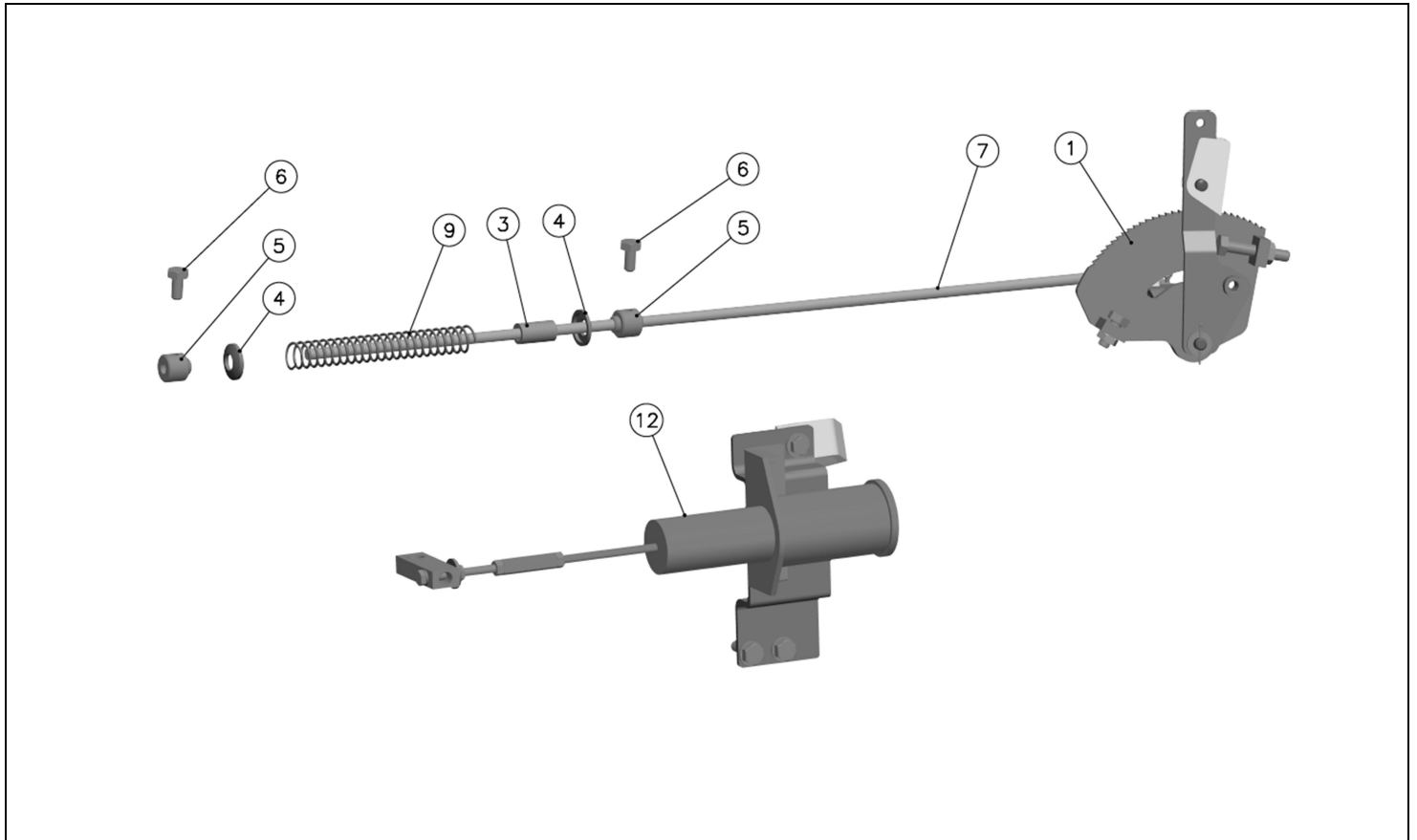


FLAT PULLEY

SR. NO	PART NO.	DESCRIPTION	QTY		
			DA20 D4.9012.02	DA20 D4.2013.01	DA20 D4.2013.02
1	10.130.14.0.00	FLAT PULLEY - 7" O.Dx8"LONG	-	1	-
2	50.505.12.000	SPRING WASHER - M12	-	3	-
3	50.014.04.014	SET SCREW - 7/16"BSFX2"L - 8.8	-	3	-

*Parts not illustrated

**Parts not Supplied Loose

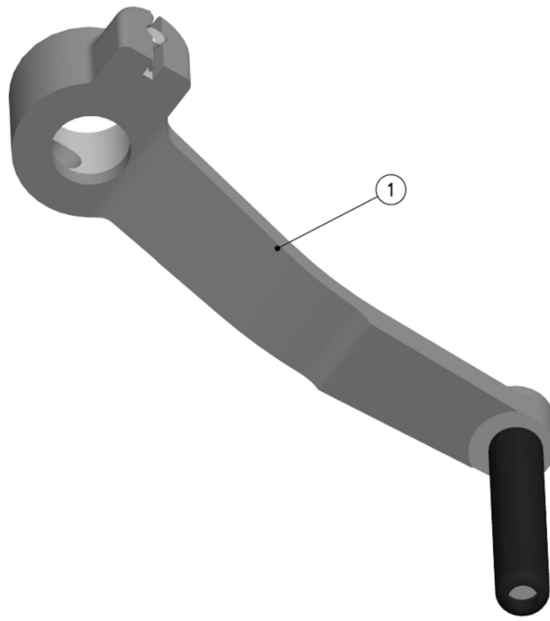


VARIABLE SPEED ARRANGEMENT

SR. NO	PART NO.	DESCRIPTION	QTY		
			DA20 D4.9012.02	DA20 D4.2013.01	DA20 D4.2013.02
1	10.402.20.0.00	RATCHET ASSEMBLY W/O SPINDLE(ES ENGINES)	-	1	-
*2	10.185.02.0.00	LINK FOR SPRING SPINDLE	-	1	-
3	12.083.09.0.00	SPRING GUIDE	-	1	-
4	10.185.04.0.00	SPHERICAL CAP FOR SPEEDER-SPRING	-	2	-
5	12.042.17.0.00	COLLAR FOR SPHERICAL CAP	-	2	-
6	50.014.01.003	SET SCREW - 1/4"BSFX1/2"L - 8.8	-	2	-
7	11.099.02.0.00	VARIABLE SPEED SPRING SPINDLE - TWIN CYL HS ENGINES	-	1	-
*8	50.016.01.000	LOCK NUT - 1/4"BSF NORMAL CLASS - GR.P	-	1	-
9	12.083.11.0.00	V S SPEEDER SPRING	-	1	-
*10	10.402.04.0.00	SPECIAL NUT FOR RATCHET TYPE VSC UNIT	-	2	-
*11	50.030.02.004	STUD 5/16"BSFX1.1/8" GRADE R	-	2	-
12	D8.108.20.0.00	STOP SOLENOID ASSLY - 12V,SINGLE COIL S/F TWIN CYL.ENGINES WITH MECH.STOPPER	-	1	1
*13	D8.108.01.0.00	CONNECTOR FOR STOP SOLENOID	-	1	1

*Parts not illustrated

**Parts not Supplied Loose



STARTING HANDLE

SR. NO	PART NO.	DESCRIPTION	QTY		
			DA20 D4.9012.02	DA20 D4.2013.01	DA20 D4.2013.02
1	D2.030.10.0.00	STARTING HANDLE ASSLY	1	1	1

*Parts not illustrated

**Parts not Supplied Loose